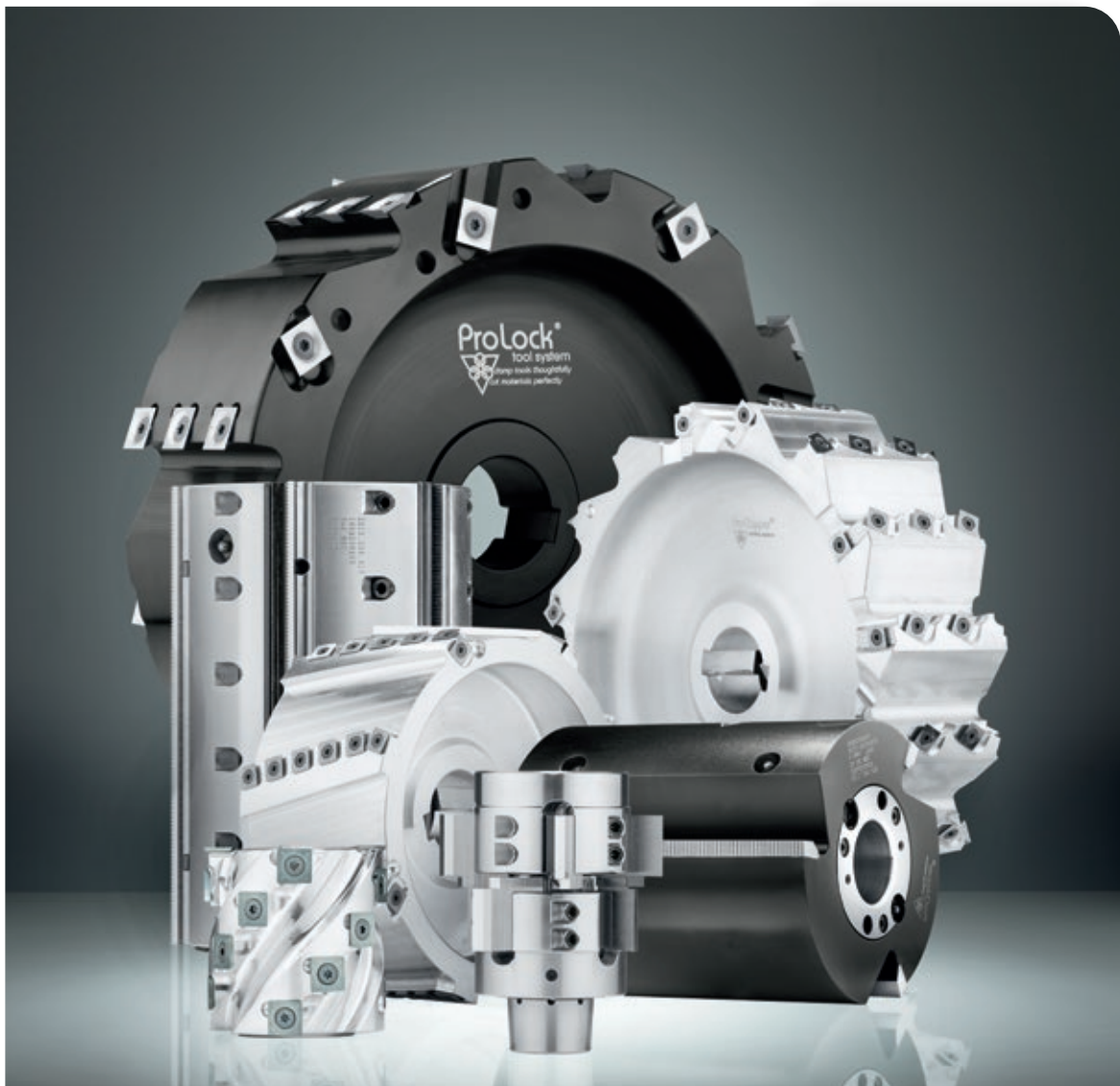


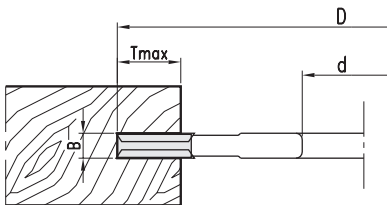
# ProChipper®



tooling systems



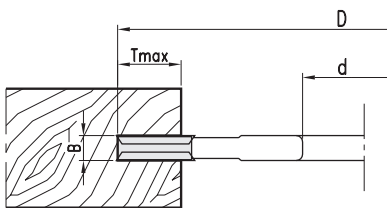
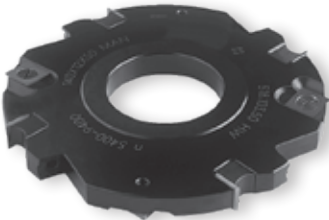
**Fräswerkzeuge mit Bohrung, nicht profiliert**  
*Bored Cutting Tools, Straight*


**WP-Nutfräser für Handvorschub**
*Groove cutter with reversible knives for manual feed*
**MAN**
**HW**

| D   | B | d     | Z | V | T <sub>max</sub> | n <sub>min</sub> - n <sub>max</sub> | Art. Nr.            |
|-----|---|-------|---|---|------------------|-------------------------------------|---------------------|
| 120 | 4 | 20/30 | 4 | 4 | 27               | 6400-11100                          | <b>4149.120.004</b> |
|     | 5 | 20/30 | 4 | 4 | 27               | 6400-11100                          | <b>4149.120.005</b> |
|     | 6 | 20/30 | 4 | 4 | 27               | 6400-11100                          | <b>4149.120.006</b> |
| 140 | 4 | 30/50 | 4 | 4 | 32               | 5500-9500                           | <b>4149.140.004</b> |
|     | 5 | 30/50 | 4 | 4 | 32               | 5500-9500                           | <b>4149.140.005</b> |
|     | 6 | 30/50 | 4 | 4 | 32               | 5500-9500                           | <b>4149.140.006</b> |

**Wechselmesser/Ersatzteile**
*Reversible knives/Spare parts*

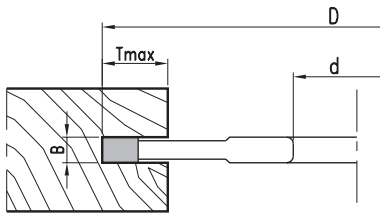
|                                | Dim.       | B     | Art. Nr.       |
|--------------------------------|------------|-------|----------------|
| Wendemesser - Reversible knife | 18x18x1,95 | 4     | <b>766.101</b> |
|                                | 18x18x2,45 | 5     | <b>766.102</b> |
|                                | 18x18x2,95 | 6     | <b>766.103</b> |
| Ring - Nut                     | 11,9x1,7   | 4     | <b>709.129</b> |
|                                | 11,9x2,2   | 5/6   | <b>709.127</b> |
| Vorschneider - Scoring blade   | 14x14x1,2  | 4/5/6 | <b>750.113</b> |
| Ring - Nut                     | 9,9x1,6    | 4/5/6 | <b>709.128</b> |
| Spannschraube - Clamping screw | M4x3,2     | 4     | <b>705.313</b> |
|                                | M4x4,2     | 5/6   | <b>705.314</b> |
| Torx Schlüssel - Torx wrench   | T9         |       | <b>706.301</b> |


**WP-Nutfräser für Handvorschub**
*Groove cutter with reversible knives for manual feed*
**MAN**
**HW**

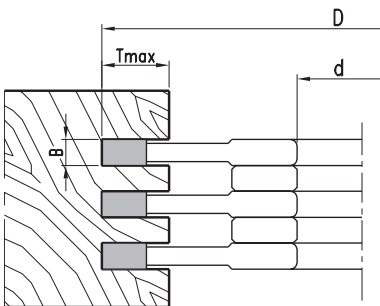
| D   | B  | d     | Z | V | T <sub>max</sub> | n <sub>min</sub> - n <sub>max</sub> | Art. Nr.            |
|-----|----|-------|---|---|------------------|-------------------------------------|---------------------|
| 140 | 8  | 30/50 | 4 | 4 | 32               | 5500-9500                           | <b>5149.140.008</b> |
|     | 9  | 30/50 | 4 | 4 | 32               | 5500-9500                           | <b>5149.140.009</b> |
|     | 10 | 30/50 | 4 | 4 | 32               | 5500-9500                           | <b>5149.140.010</b> |
|     | 12 | 30/50 | 4 | 4 | 32               | 5500-9500                           | <b>5149.140.012</b> |
|     | 15 | 30/50 | 4 | 4 | 32               | 5500-9500                           | <b>5149.140.015</b> |

**Wechselmesser/Ersatzteile**
*Reversible knives/Spare parts*

|                                | Dim.        | B       | Art. Nr.          |
|--------------------------------|-------------|---------|-------------------|
| Wendemesser - Reversible knife | 7,5x12x1,5  | 8       | <b>750.097</b>    |
|                                | 9,6x12x1,5  | 10      | <b>750.098</b>    |
|                                | 11,6x12x1,5 | 12      | <b>750.099</b>    |
|                                | 14,6x12x1,5 | 15      | <b>750.201</b>    |
| Spannkeil - Clamping wedge     |             | 8       | <b>707.002.07</b> |
|                                |             | 10      | <b>707.002.08</b> |
|                                |             | 12      | <b>707.002.10</b> |
|                                |             | 15      | <b>707.002.13</b> |
| Spannschraube - Clamping screw | M5x16       | 8       | <b>705.582</b>    |
|                                | M6x16       | 10      | <b>705.535</b>    |
|                                | M8x16       | 12/15   | <b>705.542</b>    |
| Vorschneider - Scoring blade   | 14x14x2     |         | <b>750.111</b>    |
| Spannschraube - Clamping screw | M5x6        | 8/10    | <b>705.424</b>    |
|                                | M5x8        | 12/15   | <b>705.425</b>    |
| Sechskantschlüssel - Allen key | SW2,5 (M5)  |         | <b>705.102</b>    |
|                                | SW3 (M6)    |         | <b>705.103</b>    |
|                                | SW4 (M8)    |         | <b>706.104</b>    |
| Einstelllehre - Setting gauge  |             | 0,3/0,8 | <b>717.309</b>    |

**8139****HW-Nutfräser Z=4 – Festbestückt**  
TC Groove Cutter Z=4 - Tipped**PG  
02****HW-bestückter Nutfräser für Handvorschub**  
TC-tipped groove cutter for manual feed**MAN****HW**

| D   | B  | d     | Z | T <sub>max</sub> | n <sub>min</sub> - n <sub>max</sub> | Art. Nr.            |
|-----|----|-------|---|------------------|-------------------------------------|---------------------|
| 140 | 4  | 30/50 | 4 | 32               | 5500-9500                           | <b>8139.140.004</b> |
|     | 5  | 30/50 | 4 | 32               | 5500-9500                           | <b>8139.140.005</b> |
|     | 6  | 30/50 | 4 | 32               | 5500-9500                           | <b>8139.140.006</b> |
|     | 7  | 30/50 | 4 | 32               | 5500-9500                           | <b>8139.140.007</b> |
|     | 8  | 30/50 | 4 | 32               | 5500-9500                           | <b>8139.140.008</b> |
|     | 10 | 30/50 | 4 | 32               | 5500-9500                           | <b>8139.140.010</b> |
|     | 12 | 30/50 | 4 | 32               | 5500-9500                           | <b>8139.140.012</b> |
|     | 14 | 30/50 | 4 | 32               | 5500-9500                           | <b>8139.140.014</b> |
|     | 16 | 30/50 | 4 | 32               | 5500-9500                           | <b>8139.140.016</b> |
|     | 20 | 30/50 | 4 | 32               | 5500-9500                           | <b>8139.140.020</b> |

**8139****HW-Nutfräser Z=6 – Festbestückt**  
TC Groove Cutter Z=6 - Tipped**PG  
02****HW-bestückter Nutfräser für Handvorschub**  
TC-tipped groove cutter for manual feed**MAN****HW**

| D   | B  | d     | Z | T <sub>max</sub> | n <sub>min</sub> - n <sub>max</sub> | Art. Nr.            |
|-----|----|-------|---|------------------|-------------------------------------|---------------------|
| 140 | 4  | 30/50 | 6 | 32               | 5500-9500                           | <b>8139.140.104</b> |
|     | 5  | 30/50 | 6 | 32               | 5500-9500                           | <b>8139.140.105</b> |
|     | 6  | 30/50 | 6 | 32               | 5500-9500                           | <b>8139.140.106</b> |
|     | 8  | 30/50 | 6 | 32               | 5500-9500                           | <b>8139.140.108</b> |
|     | 10 | 30/50 | 6 | 32               | 5500-9500                           | <b>8139.140.110</b> |
|     | 12 | 30/50 | 6 | 32               | 5500-9500                           | <b>8139.140.112</b> |
|     | 20 | 30/50 | 6 | 32               | 5500-9500                           | <b>8139.140.120</b> |

01



02



03



04



05



06



07



08



09

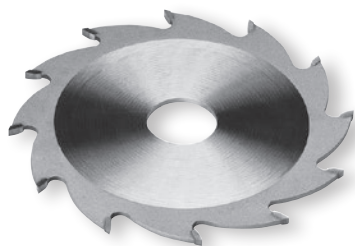


10



11

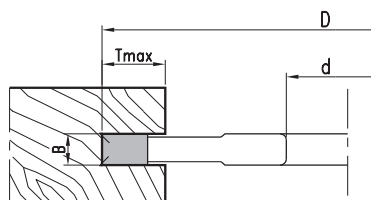




- Zahnbreite mit beidseitigem Überstand. Gehärteter Stahlgrundkörper.
- *tooth width with double-sided overhang, hardened steel body*

**HW-bestückter Nutfräser für mechanischen Vorschub**  
*TC-tipped groove cutter for mechanical feed*
**MEC****HW**

| D   | B    | b   | d  | Z                   | Art. Nr.            |
|-----|------|-----|----|---------------------|---------------------|
| 150 | 2,5  | 1,8 | 30 | 12                  | <b>8434.150.003</b> |
|     | 3,0  | 2,0 | 30 | 12                  | <b>8434.150.103</b> |
|     | 3,5  | 2,5 | 30 | 12                  | <b>8434.150.004</b> |
|     | 4,5  | 3,5 | 30 | 12                  | <b>8434.150.005</b> |
|     | 5,0  | 3,5 | 30 | 12                  | <b>8434.150.105</b> |
|     | 6,0  | 3,9 | 30 | 12                  | <b>8434.150.006</b> |
|     | 8,0  | 6,0 | 30 | 12                  | <b>8434.150.008</b> |
| 150 | 10,0 | 7,0 | 30 | 12                  | <b>8434.150.010</b> |
|     | 2,5  | 1,8 | 50 | 12                  | <b>8434.150.403</b> |
|     | 3,0  | 2,0 | 50 | 12                  | <b>8434.150.503</b> |
|     | 3,5  | 2,5 | 50 | 12                  | <b>8434.150.404</b> |
|     | 4,0  | 2,8 | 50 | 12                  | <b>8434.150.504</b> |
|     | 4,5  | 3,5 | 50 | 12                  | <b>8434.150.405</b> |
|     | 5,0  | 3,5 | 50 | 12                  | <b>8434.150.505</b> |
| 150 | 6,0  | 3,9 | 50 | 12                  | <b>8434.150.206</b> |
|     | 8,0  | 6,0 | 50 | 12                  | <b>8434.150.108</b> |
|     | 10,0 | 7,0 | 50 | 12                  | <b>8434.150.110</b> |
|     | 2,5  | 1,8 | 30 | 24                  | <b>8434.150.203</b> |
| 150 | 3,0  | 2,0 | 30 | 24                  | <b>8434.150.303</b> |
|     | 3,5  | 2,5 | 30 | 24                  | <b>8434.150.204</b> |
|     | 4,0  | 2,8 | 30 | 24                  | <b>8434.150.304</b> |
|     | 4,5  | 3,5 | 30 | 24                  | <b>8434.150.205</b> |
|     | 5,0  | 3,5 | 30 | 24                  | <b>8434.150.305</b> |
|     | 6,0  | 3,9 | 30 | 24                  | <b>8434.150.106</b> |
| 150 | 2,5  | 1,8 | 50 | 24                  | <b>8434.150.603</b> |
|     | 3,0  | 2,0 | 50 | 24                  | <b>8434.150.703</b> |
|     | 3,5  | 2,5 | 50 | 24                  | <b>8434.150.604</b> |
|     | 4,0  | 2,8 | 50 | 24                  | <b>8434.150.704</b> |
|     | 4,5  | 3,5 | 50 | 24                  | <b>8434.150.605</b> |
|     | 5,0  | 3,5 | 50 | 24                  | <b>8434.150.705</b> |
| 6,0 | 3,9  | 50  | 24 | <b>8434.150.306</b> |                     |


**HW-bestückter Nutfräser mit Vorschneidern für Handvorschub**  
*TC-tipped groove cutter with scoring blades for manual feed*
**MAN****HW**

| D   | B     | d     | Z | V  | T <sub>max</sub> | n <sub>min</sub> - n <sub>max</sub> | Art. Nr.            |
|-----|-------|-------|---|----|------------------|-------------------------------------|---------------------|
| 140 | 4     | 30/50 | 4 | 4  | 32               | 5500-9500                           | <b>8149.140.004</b> |
|     | 5     | 30/50 | 4 | 4  | 32               | 5500-9500                           | <b>8149.140.005</b> |
|     | 6     | 30/50 | 4 | 4  | 32               | 5500-9500                           | <b>8149.140.006</b> |
|     | 8     | 30/50 | 4 | 4  | 32               | 5500-9500                           | <b>8149.140.008</b> |
|     | 10    | 30/50 | 4 | 4  | 32               | 5500-9500                           | <b>8149.140.010</b> |
|     | 12    | 30/50 | 4 | 4  | 32               | 5500-9500                           | <b>8149.140.012</b> |
|     | 16    | 30/50 | 4 | 4  | 32               | 5500-9500                           | <b>8149.140.016</b> |
| 160 | 20    | 30/50 | 4 | 4  | 32               | 5500-9500                           | <b>8149.140.020</b> |
|     | 4     | 30/50 | 4 | 4  | 42               | 4800-8300                           | <b>8149.160.004</b> |
|     | 6     | 30/50 | 4 | 4  | 42               | 4800-8300                           | <b>8149.160.006</b> |
|     | 8     | 30/50 | 4 | 4  | 42               | 4800-8300                           | <b>8149.160.008</b> |
|     | 10    | 30/50 | 4 | 4  | 42               | 4800-8300                           | <b>8149.160.010</b> |
|     | 12    | 30/50 | 4 | 4  | 42               | 4800-8300                           | <b>8149.160.012</b> |
|     | 16    | 30/50 | 4 | 4  | 42               | 4800-8300                           | <b>8149.160.016</b> |
| 20  | 30/50 | 4     | 4 | 42 | 4800-8300        | <b>8149.160.020</b>                 |                     |

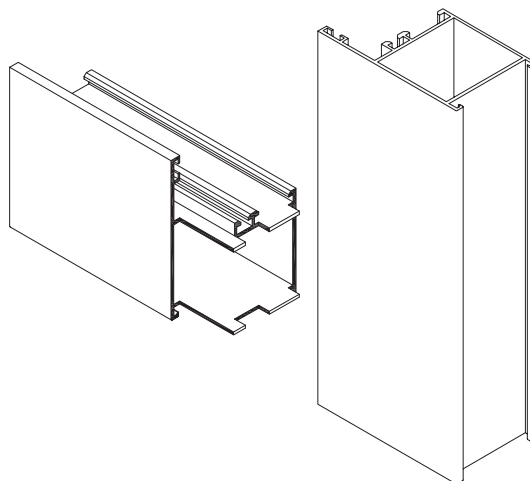

**HW-bestückter Nutfräser für mechanischen Vorschub**  
*TC-tipped groove cutter for mechanical feed*

MEC

HW

| D   | B | D  | Z  | Art. Nr.              |
|-----|---|----|----|-----------------------|
| 70  | 5 | 32 | 8  | <b>8174.070.005</b>   |
|     | 6 | 32 | 8  | <b>8174.070.006</b>   |
| 72  | 5 | 32 | 8  | <b>8174.072.005</b>   |
|     | 6 | 32 | 8  | <b>8174.072.006</b>   |
| 74  | 5 | 32 | 8  | <b>8174.074.005</b>   |
|     |   |    | 32 | 8                     |
| 80  | 5 | 32 | 8  | <b>8174.080.005</b>   |
|     | 6 | 32 | 8  | <b>8174.080.006</b>   |
| 98  | 5 | 32 | 10 | <b>8174.098.005</b>   |
|     | 6 | 32 | 10 | <b>8174.098.006</b>   |
| 100 | 5 | 32 | 10 | <b>8174.100.005</b>   |
|     | 6 | 32 | 10 | <b>8174.100.006</b>   |
| 110 | 5 | 32 | 12 | <b>8174.110.005</b>   |
|     | 6 | 32 | 12 | <b>8174.110.006</b>   |
| 112 | 5 | 32 | 12 | <b>8174.112.005</b>   |
|     | 6 | 32 | 12 | <b>8174.112.006</b>   |
| 114 | 5 | 32 | 12 | <b>8174.114.005</b>   |
|     | 6 | 32 | 12 | <b>8174.114.006</b>   |
| 80  | 6 | 32 | 12 | ◇ <b>8174.080.106</b> |
| 98  | 6 | 32 | 12 | ◇ <b>8174.098.106</b> |
| 112 | 6 | 32 | 16 | ◇ <b>8174.112.106</b> |

- ◇ Serienartikel, kurzfristige Fertigung bei Bestellung
- ◇ *standard product, manufactured promptly upon order*



8239

**HW-Nutfräser Lamello – Festbestückt**

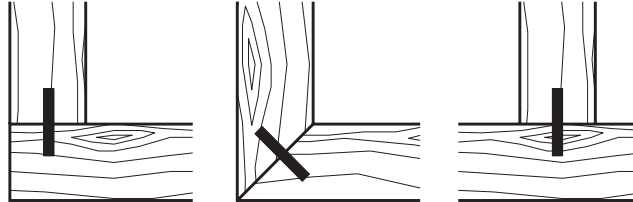
TC Groove Cutter for Lamello Machine - Tipped

PG  
02**HW-bestückter Nutfräser für Handvorschub mit Lamello-Maschine**  
TC-tipped groove cutter for manual feed on Lamello machine

MAN

HW

| D   | B    | b   | d  | Z | ML/TK    | n <sub>min</sub> - n <sub>max</sub> | Art. Nr.            |
|-----|------|-----|----|---|----------|-------------------------------------|---------------------|
| 100 | 3,97 | 2,8 | 22 | 6 | 4/4,5/36 | 7800-13300                          | <b>8239.100.006</b> |
| 100 | 3,97 | 2,8 | 22 | 8 | 4/4,5/36 | 7800-13300                          | <b>8239.100.008</b> |



4249

**HW-Nutfräser Lamello mit Vorschneidern – Wendemesser**

TC Groove Cutter with Scoring Blades for Lamello Machine - Reversible Knives

PG  
02**WP-Nutfräser für Handvorschub mit Lamello-Maschine**

Groove cutter with reversible knives for manual feed on Lamello machine

MAN

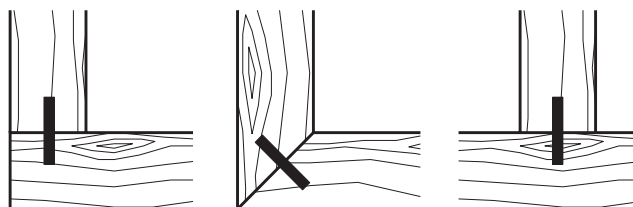
HW

| D   | B    | d  | Z | V | n <sub>min</sub> - n <sub>max</sub> | Art. Nr.            |
|-----|------|----|---|---|-------------------------------------|---------------------|
| 100 | 3,97 | 22 | 4 | 4 | 7800-13300                          | <b>4249.100.004</b> |

**Wechselmesser/Ersatzteile**

Reversible knives/Spare parts

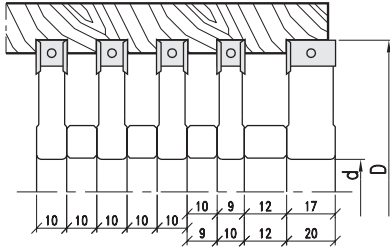
|                                | Dim.       | Art. Nr.       |
|--------------------------------|------------|----------------|
| Wendemesser - Reversible knife | 18x18x1,95 | <b>766.101</b> |
| Ring - Nut                     | 11,9x1,7   | <b>709.129</b> |
| Vorschneider - Scoring blade   | 14x14x1,2  | <b>750.113</b> |
| Ring - Nut                     | 9,9x1,6    | <b>709.128</b> |
| Spannschraube - Clamping screw | M4x3,2     | <b>705.313</b> |
| Torx Schlüssel - Torx wrench   | T9         | <b>706.301</b> |



5274

**HW-Nutenbetfräser mit Vorschneidern – Wendemesser**  
*TC Groove-Bed Cutter with Scoring Blades - Reversible Knives*

PG  
02



**WP-Nutfräser für mechanischen Vorschub**  
*Groove cutter with reversible knives for mechanical feed*

MEC

HW

| D   | B  | d  | Z | V | n <sub>max</sub> | Art. Nr.            |
|-----|----|----|---|---|------------------|---------------------|
|     | 10 | 40 | 2 | 2 | 11500            | <b>5274.125.010</b> |
|     | 17 | 40 | 2 | 2 | 11500            | <b>5274.125.017</b> |
|     | 20 | 40 | 2 | 2 | 11500            | <b>5274.125.020</b> |
| 140 | 10 | 40 | 2 | 2 | 10000            | <b>5274.140.010</b> |
|     | 20 | 40 | 2 | 2 | 10000            | <b>5274.140.020</b> |
| 150 | 12 | 40 | 3 | 3 | 8900             | <b>5274.150.012</b> |

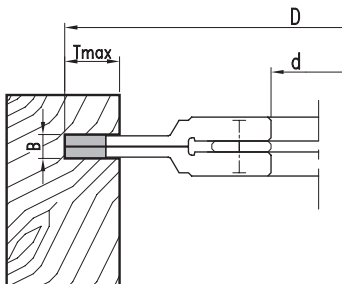
**Wechselmesser/Ersatzteile**  
*Reversible knives/Spare parts*

|                                | Dim.       | B       | Art. Nr.          |
|--------------------------------|------------|---------|-------------------|
| Wendemesser - Reversible knife | 8,6x12x1,5 | 9       | <b>750.095</b>    |
|                                | 9,6x12x1,5 | 10      | <b>750.098</b>    |
|                                | 12x12x1,5  | 12      | <b>754.102</b>    |
|                                | 17x12x1,5  | 17      | <b>750.115</b>    |
| Spannkeil - Clamping wedge     | 20x12x1,5  | 20      | <b>750.102</b>    |
|                                |            | 9/10    | <b>707.002.08</b> |
|                                |            | 17      | <b>707.002.15</b> |
| Gewindestift - Set screw       |            | 20      | <b>707.002.18</b> |
|                                | M6x12      | 9/10    | <b>705.533</b>    |
|                                | M8x16      | 17/20   | <b>705.542</b>    |
| Vorschneider - Scoring blade   | 14x14x12   |         | <b>750.111</b>    |
| Spannschraube - Clamping screw | M5x6       | 9/10    | <b>705.424</b>    |
|                                | M5x7       | 12      | <b>705.425</b>    |
| Zwischenring - Spacer ring     |            | 9       | <b>703.411</b>    |
|                                |            | 10      | <b>703.412</b>    |
|                                |            | 12      | <b>703.413</b>    |
| Sechskantschlüssel - Allen key | SW3(M6)    |         | <b>706.103</b>    |
|                                | SW4(M8)    |         | <b>706.104</b>    |
| Einstelllehre - Setting gauge  |            | 0,3/0,8 | <b>717.309</b>    |

8839

**HW-Verstellnuter – Festbestückt**  
*TC Adjustable Grooving Cutter - Tipped*

PG  
02



**HW-bestückter Nutfrässatz für Handvorschub mit Zwischenringen verstellbar**  
*TC-tipped groove cutter set for manual feed, adjustable with spacer rings*

MAN

HW

| D   | B       | d  | Z   | T <sub>max</sub> | n <sub>min</sub> - n <sub>max</sub> | Art. Nr.            |
|-----|---------|----|-----|------------------|-------------------------------------|---------------------|
| 120 | 1,8-3,4 | 30 | 6+6 | 12               | 6400-11100                          | <b>8839.120.002</b> |
|     | 2,2-4,0 | 30 | 6+6 | 15               | 6400-11100                          | <b>8839.120.102</b> |
| 140 | 2,2-4,0 | 50 | 6+6 | 15               | 5500-9500                           | <b>8839.140.002</b> |

- Inklusive Zwischenringsatz
- *spacer set included*




**WP-Profilnutfräser für Handvorschub**
*Profile groove cutter with reversible knives for manual feed*
**MAN**
**HW**

| Nr. | D   | B  | d  | Z   | V   | l | n <sub>min</sub> - n <sub>max</sub> | Art. Nr.            |
|-----|-----|----|----|-----|-----|---|-------------------------------------|---------------------|
| 1   | 136 | 15 | 50 | 2   |     | 2 | 5700-9800                           | <b>5289.136.015</b> |
| 2   | 180 | 22 | 50 | 2   | 4   |   | 4200-7200                           | <b>5289.180.022</b> |
| 3   | 136 | 15 | 50 | 2   |     | 2 | 5700-9800                           | <b>5289.136.115</b> |
| 4   | 220 | 22 | 50 | 2+2 | 4+4 |   | 3500-6000                           | <b>5289.220.022</b> |
| 5   | 244 | 22 | 50 | 2   |     |   | 3100-5300                           | <b>5289.244.022</b> |
| 6   | 200 | 22 | 50 | 2+2 | 8   |   | 3900-6900                           | <b>5289.200.022</b> |
| 7   | 220 | 22 | 50 | 2+2 | 8   |   | 3500-6300                           | <b>5289.220.122</b> |
| 8   | 224 | 22 | 50 | 2   | 2   | 2 | 3400-6200                           | <b>5289.224.022</b> |
| 16  | 162 | 22 | 50 | 2   | 4   |   | 4200-7200                           | <b>5289.162.050</b> |

- Kombination von Einzelfräsern zum Fräsen der jeweiligen Kantengetriebe-Profile
- *combination of single cutters for cutting the corresponding edge-gear profiles*

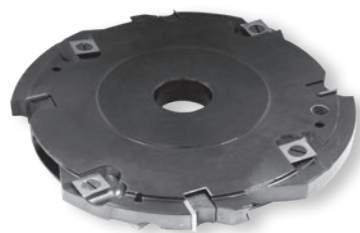
**Wendemesser/Ersatzteile**
*Reversible knives/Spare parts*

|  | Dim.        | Nr.           | Art. Nr.          |
|--|-------------|---------------|-------------------|
| Wendemesser - <i>Reversible knife</i>    | 9,6x12x1,5  | 11            | <b>750.098</b>    |
|  | 15x12x1,5   | 1             | <b>785.781</b>    |
|  | 15x12x1,5   | 3             | <b>785.782</b>    |
|  | 17,6x12x1,5 | 10/4/6/7      | <b>750.205</b>    |
|  | 21,6x12x1,5 | 2/4/5/8/10/13 | <b>750.204</b>    |
| Spannkeil - <i>Clamping wedge</i>        |             | 11            | <b>707.002.08</b> |
|  |             | 1             | <b>707.281</b>    |
|  |             | 3             | <b>707.282</b>    |
|  |             | 4/6/7/10      | <b>707.002.15</b> |
|  |             | 2/4/5/10/13   | <b>707.002.20</b> |
| Gewindestift - <i>Set screw (DIN915)</i> | M6x16       | 11            | <b>705.535</b>    |
|  | M8x16       |               | <b>705.542</b>    |
| Vorschneider - <i>Scoring blade</i>      | 14x14x2     |               | <b>750.111</b>    |
| Nutmesser - <i>Grooving knife</i>        | 35x17x3     | 1/3/9/11      | <b>783.109</b>    |
| Schraube - <i>Screw</i>                  | M5x13,5     |               | <b>705.318</b>    |
| Sechskantschlüssel - <i>Allen key</i>    | SW3(M5)     |               | <b>706.103</b>    |
|  | SW4 (M8)    |               | <b>706.104</b>    |

5189

**HW-Kantengetriebefräser mit Vorschneidern – Wendemesser**  
*TC Edge-Gear Cutter Sets with Scoring Blades - Reversible Knives*

PG  
02



**WP-Profilfräser für Handvorschub**

*Profile groove cutter with reversible knives for manual feed*

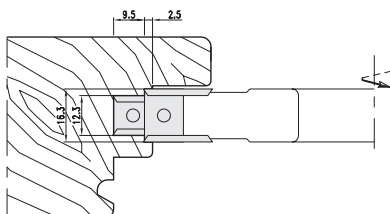
MAN

HW

| D   | B    | d     | Z   | V   | n <sub>min</sub> - n <sub>max</sub> | Art. Nr.            |
|-----|------|-------|-----|-----|-------------------------------------|---------------------|
| 184 | 16,3 | 30/60 | 2+2 | 4+4 | 4200-7200                           | <b>5189.184.016</b> |
| 200 | 16,3 | 30/60 | 2+2 | 4+4 | 3800-6500                           | <b>5189.200.016</b> |

**Wendemesser/Ersatzteile**

*Reversible knives/Spare parts*



|                                       | Dim.      | Art. Nr.          |
|---------------------------------------|-----------|-------------------|
| Wendemesser - <i>Reversible knife</i> | 12x12x1,5 | <b>754.102</b>    |
|                                       | 16x12x1,5 | <b>750.206</b>    |
| Spannkeil - <i>Clamping wedge</i>     |           | <b>707.002.10</b> |
|                                       |           | <b>707.002.13</b> |
| Gewindestift - <i>Set screw</i>       | M8x16     | <b>705.542</b>    |
| Vorschneider - <i>Scoring blade</i>   | 14x14x2   | <b>750.111</b>    |
| Spannschraube - <i>Clamping screw</i> | M5x8      | <b>705.425</b>    |
| Sechskantschlüssel - <i>Allen key</i> | SW4       | <b>706.104</b>    |

8189

**HW-Schlitzscheibe mit Vorschneidern – Festbestückt**  
*TC Slot Cutting Wheel - Tipped*

PG  
02



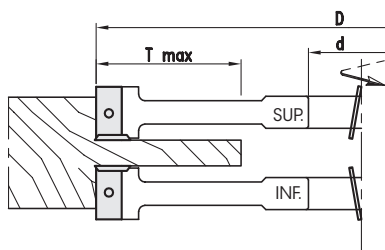
**HW- oder HS-bestückte Schlitzscheibe mit Vorschneidern für Handvorschub**

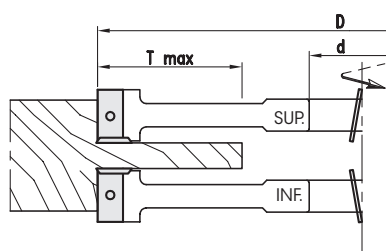
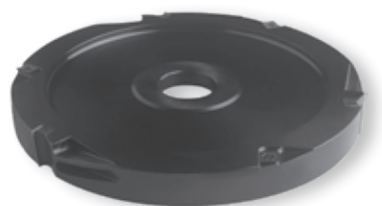
*TC- or HSS-tipped slot cutting wheel with scoring blades for manual feed*

MAN

HW/HS

| D   | B  | d  | Z | V | T <sub>max</sub> | n <sub>min</sub> - n <sub>max</sub> | Art. Nr. HW         | Art. Nr. HS         |
|-----|----|----|---|---|------------------|-------------------------------------|---------------------|---------------------|
| 250 | 18 | 50 | 3 | 3 | 90               | 3100-5300                           | <b>8189.250.018</b> | <b>8189.250.118</b> |
|     | 24 | 50 | 3 | 3 | 90               | 3100-5300                           | <b>8189.250.024</b> | <b>8189.250.124</b> |
|     | 30 | 50 | 3 | 3 | 90               | 3100-5300                           | <b>8189.250.030</b> | <b>8189.250.130</b> |
|     | 40 | 50 | 3 | 3 | 90               | 3100-5300                           | <b>8189.250.040</b> | <b>8189.250.140</b> |
| 300 | 18 | 50 | 3 | 3 | 115              | 2600-4400                           | <b>8189.300.018</b> | <b>8189.300.118</b> |
|     | 24 | 50 | 3 | 3 | 115              | 2600-4400                           | <b>8189.300.024</b> | <b>8189.300.124</b> |
|     | 30 | 50 | 3 | 3 | 115              | 2600-4400                           | <b>8189.300.030</b> | <b>8189.300.130</b> |
|     | 40 | 50 | 3 | 3 | 115              | 2600-4400                           | <b>8189.300.040</b> | <b>8189.300.140</b> |
| 320 | 18 | 50 | 3 | 3 | 125              | 2400-4100                           | <b>8189.320.018</b> | <b>8189.320.118</b> |
|     | 24 | 50 | 3 | 3 | 125              | 2400-4100                           | <b>8189.320.024</b> | <b>8189.320.124</b> |
|     | 30 | 50 | 3 | 3 | 125              | 2400-4100                           | <b>8189.320.030</b> | <b>8189.320.130</b> |
|     | 40 | 50 | 3 | 3 | 125              | 2400-4100                           | <b>8189.320.040</b> | <b>8189.320.140</b> |



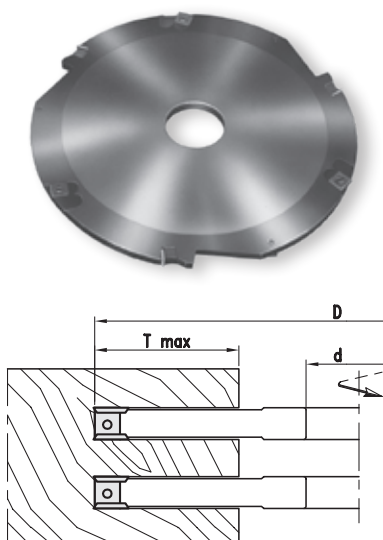

**HW- oder HS-bestückte Schlitzscheibe mit Vorschneidern für Handvorschub**  
*TC- or HSS-tipped slot cutting wheel with scoring blades for manual feed*
**MAN****HW**

| D   | B  | d  | Z | V | T <sub>max</sub> | n <sub>min</sub> - n <sub>max</sub> | Art. Nr. SUP        | Art. Nr. INF        |
|-----|----|----|---|---|------------------|-------------------------------------|---------------------|---------------------|
| 250 | 20 | 50 | 3 | 3 | 90               | 3100-3500                           | <b>5249.250.020</b> | <b>5249.250.120</b> |
|     | 25 | 50 | 3 | 3 | 90               | 3100-3500                           | <b>5249.250.025</b> | <b>5249.250.125</b> |
|     | 30 | 50 | 3 | 3 | 90               | 3100-3500                           | <b>5249.250.030</b> | <b>5249.250.130</b> |
|     | 40 | 50 | 3 | 3 | 90               | 3100-3500                           | <b>5249.250.040</b> | <b>5249.250.140</b> |
| 272 | 30 | 50 | 3 | 3 | 100              | 2800-4900                           | <b>5249.272.030</b> | <b>5249.272.130</b> |
|     | 40 | 50 | 3 | 3 | 100              | 2800-4900                           | <b>5249.272.040</b> | <b>5249.272.140</b> |
| 280 | 25 | 50 | 3 | 3 | 105              | 2800-4700                           | <b>5249.280.025</b> | <b>5249.280.125</b> |
|     | 30 | 50 | 3 | 3 | 105              | 2800-4700                           | <b>5249.280.030</b> | <b>5249.280.130</b> |
|     | 40 | 50 | 3 | 3 | 105              | 2800-4700                           | <b>5249.280.040</b> | <b>5249.280.140</b> |
| 300 | 25 | 50 | 3 | 3 | 115              | 2600-4400                           | <b>5249.300.025</b> | <b>5249.300.125</b> |
|     | 30 | 50 | 3 | 3 | 115              | 2600-4400                           | <b>5249.300.030</b> | <b>5249.300.130</b> |
|     | 40 | 50 | 3 | 3 | 115              | 2600-4400                           | <b>5249.300.040</b> | <b>5249.300.140</b> |
| 302 | 30 | 50 | 3 | 3 | 115              | 2600-4400                           | <b>5249.302.030</b> | <b>5249.302.130</b> |
|     | 40 | 50 | 3 | 3 | 115              | 2600-4400                           | <b>5249.302.040</b> | <b>5249.302.140</b> |
| 320 | 25 | 50 | 3 | 3 | 125              | 2400-4100                           | <b>5249.320.025</b> | <b>5249.320.125</b> |
|     | 30 | 50 | 3 | 3 | 125              | 2400-4100                           | <b>5249.320.030</b> | <b>5249.320.130</b> |
|     | 40 | 50 | 3 | 3 | 125              | 2400-4100                           | <b>5249.320.040</b> | <b>5249.320.140</b> |

- ◇ Serienartikel, kurzfristige Fertigung bei Bestellung
- ◇ *standard product, manufactured promptly upon order*
- Ausführung mit ziehendem Schnitt
- *with axial angle*

**Wendemesser/Ersatzteile**
*Reversible knives/Spare parts*

|                                       | Dim.       | Nr. | Art. Nr.          |
|---------------------------------------|------------|-----|-------------------|
| Wendemesser - <i>Reversible knife</i> | 20x12x1,5  |     | <b>750.102</b>    |
|                                       | 4,7x12x1,5 |     | <b>750.103</b>    |
|                                       | 30x12x1,5  |     | <b>750.104</b>    |
|                                       | 40x12x1,5  |     | <b>750.105</b>    |
| Spannkeil - <i>Clamping wedge</i>     |            | INF | <b>707.133.20</b> |
|                                       |            |     | <b>707.133.25</b> |
|                                       |            |     | <b>707.133.30</b> |
|                                       |            |     | <b>707.133.40</b> |
|                                       |            | SUP | <b>707.130.20</b> |
|                                       |            |     | <b>707.130.25</b> |
|                                       |            |     | <b>707.130.30</b> |
|                                       |            |     | <b>707.130.40</b> |
| Gewindestift - <i>Set screw</i>       | M8x16      |     | <b>705.542</b>    |
| Vorschneider - <i>Scoring blade</i>   | 14x14x2    |     | <b>750.111</b>    |
| Spannschraube - <i>Clamping screw</i> | M5x8       |     | <b>705.425</b>    |
| Sechskantschlüssel - <i>Allen key</i> | SW4(M8)    |     | <b>706.104</b>    |


**WP-Schlitzscheibe mit Vorschneidern für Handvorschub**
*Slot cutting wheel with reversible knives and scoring blades for manual feed*
**MAN**
**HW**

| D   | B  | d     | Z | V | T <sub>max</sub> | n <sub>min</sub> - n <sub>max</sub> | Art. Nr.            |
|-----|----|-------|---|---|------------------|-------------------------------------|---------------------|
| 250 | 8  | 30/50 | 3 | 6 | 80               | 3100-5300                           | <b>5199.250.008</b> |
|     | 10 | 30/50 | 3 | 6 | 80               | 3100-5300                           | <b>5199.250.010</b> |
|     | 12 | 30/50 | 3 | 6 | 80               | 3100-5300                           | <b>5199.250.012</b> |
|     | 15 | 30/50 | 3 | 6 | 80               | 3100-5300                           | <b>5199.250.015</b> |
|     | 20 | 30/50 | 3 | 6 | 80               | 3100-5300                           | <b>5199.250.020</b> |
| 272 | 8  | 30/50 | 3 | 6 | 90               | 2800-4900                           | <b>5199.272.008</b> |
|     | 10 | 30/50 | 3 | 6 | 90               | 2800-4900                           | <b>5199.272.010</b> |
|     | 12 | 30/50 | 3 | 6 | 90               | 2800-4900                           | <b>5199.272.012</b> |
|     | 15 | 30/50 | 3 | 6 | 90               | 2800-4900                           | <b>5199.272.015</b> |
|     | 20 | 30/50 | 3 | 6 | 90               | 2800-4900                           | <b>5199.272.020</b> |
| 280 | 8  | 30/50 | 3 | 6 | 95               | 2800-4700                           | <b>5199.280.008</b> |
|     | 10 | 30/50 | 3 | 6 | 95               | 2800-4700                           | <b>5199.280.010</b> |
|     | 12 | 30/50 | 3 | 6 | 95               | 2800-4700                           | <b>5199.280.012</b> |
|     | 15 | 30/50 | 3 | 6 | 95               | 2800-4700                           | <b>5199.280.015</b> |
|     | 20 | 30/50 | 3 | 6 | 95               | 2800-4700                           | <b>5199.280.020</b> |
| 302 | 8  | 30/50 | 3 | 6 | 110              | 2600-4400                           | <b>5199.302.008</b> |
|     | 10 | 30/50 | 3 | 6 | 110              | 2600-4400                           | <b>5199.302.010</b> |
|     | 12 | 30/50 | 3 | 6 | 110              | 2600-4400                           | <b>5199.302.012</b> |
|     | 15 | 30/50 | 3 | 6 | 110              | 2600-4400                           | <b>5199.302.015</b> |
|     | 20 | 30/50 | 3 | 6 | 110              | 2600-4400                           | <b>5199.302.020</b> |

- ◇ Serienartikel, kurzfristige Fertigung bei Bestellung
- ◇ *standard product, manufactured promptly upon order*

**Wendemesser/Ersatzteile**
*Reversible knives/Spare parts*

|                                       | Dim.        | B     | Art. Nr.          |
|---------------------------------------|-------------|-------|-------------------|
| Wendemesser - <i>Reversible knife</i> | 7,5x12x1,5  |       | <b>750.097</b>    |
|                                       | 9,6x12x1,5  |       | <b>750.098</b>    |
|                                       | 11,6x12x1,5 |       | <b>750.099</b>    |
|                                       | 14,6x12x1,5 |       | <b>750.201</b>    |
|                                       | 19,6x12x1,5 |       | <b>750.208</b>    |
| Spannkeil - <i>Clamping wedge</i>     |             |       | <b>707.002.07</b> |
|                                       |             |       | <b>707.002.08</b> |
|                                       |             |       | <b>707.002.10</b> |
|                                       |             |       | <b>707.002.13</b> |
| Gewindestift - <i>Set screw</i>       | M5x12       | 8     | <b>705.523</b>    |
|                                       | M6x16       | 10    | <b>705.535</b>    |
|                                       | M8x16       | 12/20 | <b>705.542</b>    |
| Vorschneider - <i>Scoring blade</i>   | 14x14x2     |       | <b>750.111</b>    |
| Spannschraube - <i>Clamping screw</i> | M5x6        | 8/10  | <b>705.424</b>    |
|                                       | M5x8        | 12/20 | <b>705.425</b>    |
| Sechskantschlüssel - <i>Allen key</i> | SW2(M5)     |       | <b>706.102</b>    |
|                                       | SW3(M6)     |       | <b>706.103</b>    |
|                                       | SW(M8)      |       | <b>706.104</b>    |


**HW- oder HS-bestückte Schlitzscheibe für Handvorschub**  
*TC- or HSS-tipped slot cutting wheel for manual feed*

MAN

HW/HS

| D   | B  | d  | Z | T <sub>max</sub> | n <sub>min</sub> - n <sub>max</sub> | Art.Nr. HW          | Art. Nr. HS         |
|-----|----|----|---|------------------|-------------------------------------|---------------------|---------------------|
| 250 | 8  | 50 | 3 | 90               | 3100-5300                           | <b>8199.250.008</b> | <b>8199.250.108</b> |
|     | 10 | 50 | 3 | 90               | 3100-5300                           | <b>8199.250.010</b> | <b>8199.250.110</b> |
|     | 12 | 50 | 3 | 90               | 3100-5300                           | <b>8199.250.012</b> | <b>8199.250.112</b> |
|     | 15 | 50 | 3 | 90               | 3100-5300                           | <b>8199.250.015</b> | <b>8199.250.115</b> |
| 272 | 8  | 50 | 3 | 100              | 2800-4900                           | <b>8199.272.008</b> | <b>8199.272.108</b> |
|     | 10 | 50 | 3 | 100              | 2800-4900                           | <b>8199.272.010</b> | <b>8199.272.110</b> |
|     | 12 | 50 | 3 | 100              | 2800-4900                           | <b>8199.272.012</b> | <b>8199.272.112</b> |
| 280 | 8  | 50 | 3 | 105              | 2800-4700                           | <b>8199.280.008</b> | <b>8199.280.108</b> |
|     | 10 | 50 | 3 | 105              | 2800-4700                           | <b>8199.280.010</b> | <b>8199.280.110</b> |
|     | 12 | 50 | 3 | 105              | 2800-4700                           | <b>8199.280.012</b> | <b>8199.280.112</b> |
|     | 15 | 50 | 3 | 105              | 2800-4700                           | <b>8199.280.015</b> | <b>8199.280.115</b> |
| 302 | 8  | 50 | 3 | 115              | 2600-4400                           | <b>8199.302.008</b> | <b>8199.302.108</b> |
|     | 10 | 50 | 3 | 115              | 2600-4400                           | <b>8199.302.010</b> | <b>8199.302.110</b> |
|     | 12 | 50 | 3 | 115              | 2600-4400                           | <b>8199.302.012</b> | <b>8199.302.112</b> |
|     | 15 | 50 | 3 | 115              | 2600-4400                           | <b>8199.302.015</b> | <b>8199.302.115</b> |

- ◇ Serienartikel, kurzfristige Fertigung bei Bestellung
- ◇ *standard product, manufactured promptly upon order*


**WP-Nutfräsersatz für Handvorschub mit Zwischenringen verstellbar**
*Groove cutter set with reversible knives for manual feed, adjustable with spacer rings*

MAN

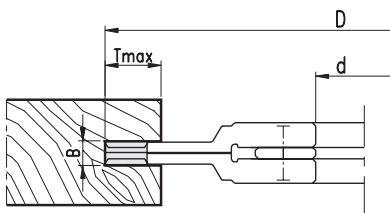
HW

| D   | B       | d     | Z | V | T <sub>max</sub> | n <sub>min</sub> - n <sub>max</sub> | Art. Nr.            |
|-----|---------|-------|---|---|------------------|-------------------------------------|---------------------|
| 160 | 8-15    | 30/50 | 4 | 4 | 32               | 4800-8300                           | <b>5849.160.008</b> |
|     | 12,6-24 | 30/50 | 4 | 4 | 32               | 4800-8300                           | <b>5849.160.013</b> |
| 180 | 8-15    | 30/50 | 4 | 4 | 38               | 4300-7400                           | <b>5849.180.008</b> |
|     | 12,6-24 | 30/50 | 4 | 4 | 38               | 4300-7400                           | <b>5849.180.013</b> |

- Inklusive Zwischenringsatz
- *spacer set included*

**Wendemesser/Ersatzteile**
*Reversible knives/Spare parts*

|                                | Dim.       | B       | Art. Nr.          |
|--------------------------------|------------|---------|-------------------|
| Wendemesser - Reversible knife | 7,5x12x1,5 | 8-15    | <b>750.097</b>    |
| Spannkeil - Clamping wedge     | 12x12x1,5  | 12,6-24 | <b>754.102</b>    |
| Gewindestift - Set screw       | M5x16      | 8-15    | <b>707.002.06</b> |
|                                |            | 12,6-24 | <b>707.002.10</b> |
| Vorschneider - Scoring blade   | 14x14x2    | 8-15    | <b>705.582</b>    |
|                                |            | 12,6-24 | <b>705.542</b>    |
| Gewindestift - Set screw       | M5x8       | 8-15    | <b>705.424</b>    |
|                                |            | 12,6-24 | <b>705.425</b>    |
| Sechskantschlüssel - Allen key | SW2,5 (M5) |         | <b>706.102</b>    |
|                                | SW4 (M8)   |         | <b>706.104</b>    |
| Zwischenringsatz - Spacer set  |            | 8-15    | <b>703.039</b>    |
|                                |            | 12,6-24 | <b>703.040</b>    |
| Einstellehre - Setting gauge   |            | 0,3/0,8 | <b>717.309</b>    |



4849

**HW-Verstellnuten mit Vorschneidern – Wendemesser**  
*TC Adjustable Grooving Cutter with Scoring Blades - Reversible Knives*

PG  
02



**WP-Nutfräsersatz für Handvorschub mit Zwischenringen verstellbar**  
*Groove cutter set with reversible knives for manual feed, adjustable with spacer rings*

MAN

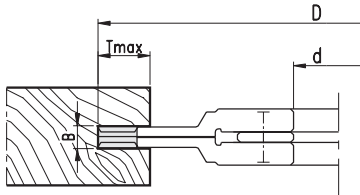
HW

| D   | B      | d     | Z | V | T <sub>max</sub> | n <sub>min</sub> - n <sub>max</sub> | Art. Nr.            |
|-----|--------|-------|---|---|------------------|-------------------------------------|---------------------|
| 160 | 4-7,5  | 30/50 | 8 | 4 | 32               | 4800-8300                           | <b>4849.160.004</b> |
|     | 4-15,0 | 30/50 | 8 | 4 | 32               | 4800-8300                           | <b>4849.160.104</b> |
| 180 | 4-7,5  | 30/50 | 8 | 4 | 38               | 4300-7400                           | <b>4849.180.004</b> |
|     | 4-15,0 | 30/50 | 8 | 4 | 38               | 4300-7400                           | <b>4849.180.104</b> |

- Inklusive Zwischenringsatz  
*spacer set included*

**Wendemesser/Ersatzteile**  
*Reversible knives/Spare parts*

|                                | Dim.       | B          | Art. Nr.          |
|--------------------------------|------------|------------|-------------------|
| Wendemesser - Reversible knife | 7,5x12x1,5 | 7,5 (4-15) | <b>750.097</b>    |
| Spannkeil - Clamping wedge     |            | 7,5 (4-15) | <b>707.002.07</b> |
| Gewindestift - Set screw       | M5x12      | 7,5 (4-15) | <b>705.523</b>    |
| Wendemesser - Reversible knife | 18x18x1,95 | 4-7,5      | <b>766.101</b>    |
| Ring - Nut                     | 11,9x1,7   | 4-7,5      | <b>709.129</b>    |
| Vorschneider - Scoring blade   | 14x14x1,2  | 4-7,5      | <b>750.113</b>    |
| Ring - Nut                     | 9,9x1,6    | 4-7,5      | <b>709.128</b>    |
| Spannschraube - Clamping screw | M4x3,2     | 4-7,5      | <b>705.313</b>    |
| Sechskantschlüssel - Allen key | SW2,5 (M5) |            | <b>706.102</b>    |
| Torx Schlüssel - Torx wrench   | T9         |            | <b>706.301</b>    |
| Zwischenringsatz - Spacer set  |            | 4-7,5      | <b>703.032</b>    |



Nutbreite • *grooving width*  
 4-7,5: 2-teilig • *2-piece construction*  
 4-15: 3-teilig • *3-piece construction*

5949

**HW-Verstellnuten mit Vorschneidern auf Gewindebüchse – Wendemesser**  
*TC Adjustable Grooving Cutter with Scoring Blades on Threaded Bushing - Reversible Knives*

PG  
02



**WP-Nutfräsersatz für Handvorschub, stufenlos einstellbar**  
*Groove cutter set with reversible knives for manual feed, infinitely variable*

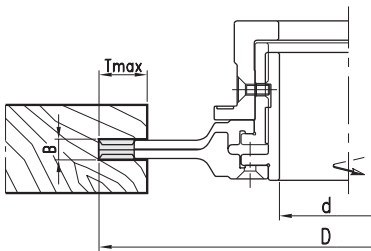
MAN

HW

| D   | B       | d     | Z | V | T <sub>max</sub> | n <sub>min</sub> - n <sub>max</sub> | Art. Nr.            |
|-----|---------|-------|---|---|------------------|-------------------------------------|---------------------|
| 180 | 8-15    | 30/50 | 4 | 4 | 32               | 4300-7400                           | <b>5949.180.008</b> |
|     | 12,6-24 | 30/50 | 4 | 4 | 32               | 4300-7400                           | <b>5949.180.013</b> |

**Wendemesser/Ersatzteile**  
*Reversible knives/Spare parts*

|                                | Dim.       | B       | Art. Nr.          |
|--------------------------------|------------|---------|-------------------|
| Wendemesser - Reversible knife | 7,5x12x1,5 | 8-15    | <b>750.097</b>    |
|                                | 12x12x1,5  | 12,6-24 | <b>754.102</b>    |
| Spannkeil - Clamping wedge     |            | 8-15    | <b>707.002.06</b> |
|                                |            | 12,6-24 | <b>707.002.10</b> |
| Spannschraube - Clamping screw | M5x16      | 8-15    | <b>705.582</b>    |
|                                | M8x16      | 12,6-24 | <b>705.542</b>    |
| Vorschneider - Scoring blade   | 14x14x2    |         | <b>750.111</b>    |
| Spannschraube - Clamping screw | M5x6       | 8-15    | <b>705.424</b>    |
|                                | M5x8       | 12,6-24 | <b>705.425</b>    |
| Sechskantschlüssel - Allen key | SW2,5 (M5) |         | <b>706.102</b>    |
|                                | SW (M8)    |         | <b>706.104</b>    |
| Einstellehre - Setting gauge   |            | 0,3/0,8 | <b>717.309</b>    |



**4949**

## HW-Verstellnuten mit Vorschneidern auf Gewindebühse – Wendemesser TC Adjustable Grooving Cutter with Scoring Blades on Threaded Bushing - Reversible Knives

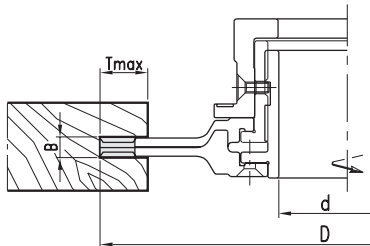
**PG  
02**

**WP-Nutfräsersatz für Handvorschub, stufenlos einstellbar**  
Groove cutter set with reversible knives for manual feed, infinitely variable

**MAN****HW**

| D   | B     | d     | Z | V | T <sub>max</sub> | n <sub>min</sub> - n <sub>max</sub> | Art. Nr.            |
|-----|-------|-------|---|---|------------------|-------------------------------------|---------------------|
| 180 | 4-7,5 | 30/50 | 8 | 4 | 32               | 4300-7400                           | <b>4949.180.004</b> |

**Wendemesser/Ersatzteile**  
Reversible knives/Spare parts



|                                | Dim.       | Art. Nr.       |
|--------------------------------|------------|----------------|
| Wendemesser - Reversible knife | 18x18x1,95 | <b>766.101</b> |
| Ring - Nut                     | 11,9x1,7   | <b>709.129</b> |
| Vorschneider - Scoring blade   | 14x14x1,2  | <b>750.113</b> |
| Ring - Nut                     | 9,9x1,6    | <b>709.128</b> |
| Spannschraube - Clamping screw | M4x3,2     | <b>705.313</b> |
| Torx Schlüssel - Torx wrench   | T9         | <b>706.301</b> |

**8949**

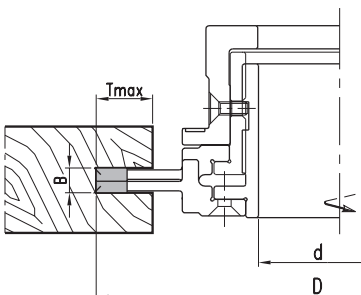
## HW-Verstellnuten mit Vorschneidern auf Gewindebühse – Festbestückt TC Adjustable Grooving Cutter with Scoring Blades on Threaded Bushing - Tipped

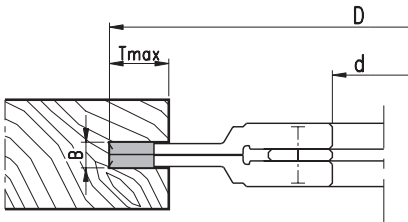
**PG  
02**

**HW-bestückter Nutfräsersatz mit Vorschneidern für Handvorschub, stufenlos einstellbar**  
TC-tipped groove cutter set with scoring blades for manual feed, infinitely variable

**MAN****HW**

| D   | B      | d     | Z | V | T <sub>max</sub> | n <sub>min</sub> - n <sub>max</sub> | Art. Nr.            |
|-----|--------|-------|---|---|------------------|-------------------------------------|---------------------|
| 150 | 4-7,5  | 30/50 | 4 | 4 | 27               | 5200-8900                           | <b>8949.150.004</b> |
|     | 7-13,5 | 30/50 | 4 | 4 | 27               | 5200-8900                           | <b>8949.150.007</b> |




**HW-bestückter Nutfräsersatz mit Vorschneidern für Handvorschub**  
*TC-tipped groove cutter set with scoring blades for manual feed*
**MAN**
**HW**

| D   | B       | d     | Z | V | T <sub>max</sub> | n <sub>min</sub> - n <sub>max</sub> | Art. Nr.            |
|-----|---------|-------|---|---|------------------|-------------------------------------|---------------------|
| 120 | 3,5-3,6 | 30/50 | 4 | 4 | 16               | 6400-11100                          | <b>8849.120.004</b> |
|     | 5-9,5   | 30/50 | 4 | 4 | 16               | 6400-11100                          | <b>8849.120.005</b> |
|     | 10-19,5 | 30/50 | 4 | 4 | 16               | 6400-11100                          | <b>8849.120.010</b> |
| 140 | 4-7,5   | 30/50 | 4 | 4 | 22               | 5500-9500                           | <b>8849.140.004</b> |
|     | 5-9,5   | 30/50 | 4 | 4 | 22               | 5500-9500                           | <b>8849.140.005</b> |
|     | 7-13,5  | 30/50 | 4 | 4 | 22               | 5500-9500                           | <b>8849.140.007</b> |
|     | 10-19,5 | 30/50 | 4 | 4 | 22               | 5500-9500                           | <b>8849.140.010</b> |
|     | 15-29,5 | 30/50 | 4 | 4 | 22               | 5500-9500                           | <b>8849.140.015</b> |
| 160 | 20-39,5 | 30/50 | 4 | 4 | 22               | 5500-9500                           | <b>8849.140.020</b> |
|     | 30-59,5 | 30/50 | 4 | 4 | 22               | 5500-9500                           | <b>8849.140.030</b> |
|     | 4-7,5   | 30/50 | 4 | 4 | 32               | 4800-8300                           | <b>8849.160.004</b> |
|     | 5-9,5   | 30/50 | 4 | 4 | 32               | 4800-8300                           | <b>8849.160.005</b> |
|     | 7-13,5  | 30/50 | 4 | 4 | 32               | 4800-8300                           | <b>8849.160.007</b> |
|     | 10-19,5 | 30/50 | 4 | 4 | 32               | 4800-8300                           | <b>8849.160.010</b> |

- Inklusive Zwischenringsatz
- *spacer set included*

**Zwischenringsatz**  
*Spacer set*

| B       | d     | Art. Nr.       |
|---------|-------|----------------|
| 3,5-6,5 | 30/50 | <b>703.031</b> |
| 4-7,5   | 30/50 | <b>703.032</b> |
| 5-9,5   | 30/50 | <b>703.033</b> |
| 7-13,5  | 30/50 | <b>703.034</b> |
| 10-19,5 | 30/50 | <b>703.035</b> |
| 20-39,5 | 30/50 | <b>703.037</b> |

**8879**

## HW-Verstellnutter mit Vorschneidern – Festbestückt

TC Adjustable Grooving Cutter with Scoring Blades - Tipped

PG  
02

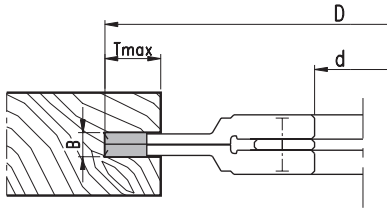
**HW-bestückter Nutfräsersatz mit Vorschneidern für Handvorschub**  
TC-tipped groove cutter set with scoring blades for manual feed

MAN

HW

| D   | B       | d     | Z | V | T <sub>max</sub> | n <sub>min</sub> - n <sub>max</sub> | Art. Nr.            |
|-----|---------|-------|---|---|------------------|-------------------------------------|---------------------|
| 200 | 5-9,5   | 30/50 | 4 | 4 | 45               | 3900-6600                           | <b>8879.200.005</b> |
|     | 10-19,5 | 30/50 | 4 | 4 | 45               | 3900-6600                           | <b>8879.200.010</b> |
| 250 | 7-13,5  | 30/50 | 4 | 4 | 70               | 3100-5300                           | <b>8879.250.007</b> |
|     | 10-19,5 | 30/50 | 4 | 4 | 70               | 3100-5300                           | <b>8879.250.010</b> |
|     | 15-29,5 | 30/50 | 4 | 4 | 70               | 3100-5300                           | <b>8879.250.015</b> |

- Inklusive Zwischenringsatz
- spacer set included



**Zwischenringsatz**  
Spacer set

| B       | d     | Art. Nr.       |
|---------|-------|----------------|
| 5-9,5   | 30/50 | <b>703.033</b> |
| 7-13,5  | 30/50 | <b>703.034</b> |
| 10-19,5 | 30/50 | <b>703.035</b> |
| 15-29,5 | 30/50 | <b>703.036</b> |

**8889**

## HW-Verstellnutter mit Vorschneidern – Festbestückt

TC Adjustable Grooving Cutter with Scoring Blades - Tipped

PG  
02

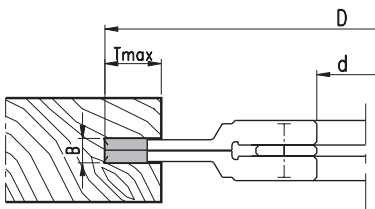
**HW-bestückter Nutfräsersatz mit Vorschneidern für Handvorschub**  
TC-tipped groove cutter set with scoring blades for manual feed

MAN

HW

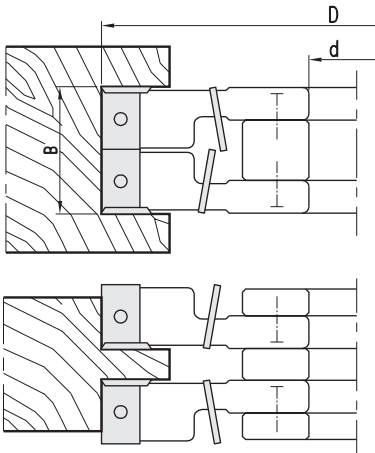
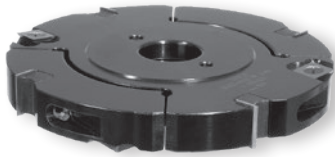
| D   | B       | d  | Z | V | T <sub>max</sub> | n <sub>min</sub> - n <sub>max</sub> | Art. Nr.            |
|-----|---------|----|---|---|------------------|-------------------------------------|---------------------|
| 250 | 7-13,5  | 30 | 8 | 8 | 40               | 3100-5300                           | <b>8889.250.007</b> |
|     | 10-19,5 | 30 | 8 | 8 | 40               | 3100-5300                           | <b>8889.250.010</b> |
|     | 15-29,5 | 30 | 8 | 8 | 40               | 3100-5300                           | <b>8889.250.015</b> |

- Inklusive Zwischenringsatz
- spacer set included



**Zwischenringsatz**  
Spacer set

| B       | Art. Nr.       |
|---------|----------------|
| 7-13,5  | <b>703.034</b> |
| 10-19,5 | <b>703.035</b> |
| 15-29,5 | <b>703.036</b> |


**WP-Nut- und Zapfenfräsersatz mit Vorschneidern für Handvorschub**  
*Groove and tenon cutter set with reversible knives and scoring blades for manual feed*

MAN

HW

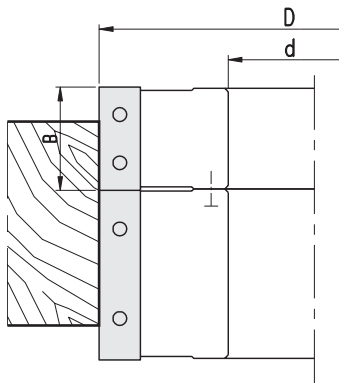
| D   | B      | d     | Z | V | n <sub>min</sub> - n <sub>max</sub> | Art. Nr.            |
|-----|--------|-------|---|---|-------------------------------------|---------------------|
| 160 | 16-30  | 30/50 | 4 | 4 | 4800-8300                           | <b>5749.160.016</b> |
|     | 21-40  | 30/50 | 4 | 4 | 4800-8300                           | <b>5749.160.021</b> |
|     | 31-60  | 30/50 | 4 | 4 | 4800-8300                           | <b>5749.160.031</b> |
|     | 51-100 | 30/50 | 4 | 4 | 4800-8300                           | <b>5749.160.051</b> |

- Inklusive Zwischenringsatz
- Mit wechselseitigen Achswinkel
- *spacer set included*
- *with alternating axial angle*

**Wendemesser/Ersatzteile**  
*Reversible knives/Spare parts*

|                                       | Dim.      | B       | Art. Nr.          |
|---------------------------------------|-----------|---------|-------------------|
| Wendemesser - <i>Reversible knife</i> | 15x12x1,5 | 16-30   | <b>750.101</b>    |
|                                       | 20x12x1,5 | 21-40   | <b>750.102</b>    |
|                                       | 30x12x1,5 | 31-60   | <b>750.104</b>    |
|                                       | 50x12x1,5 | 51-100  | <b>750.106</b>    |
| Spannkeil - <i>Clamping wedge</i>     |           | 16-30   | <b>707.002.13</b> |
|                                       |           | 21-40   | <b>707.002.18</b> |
|                                       |           | 31-60   | <b>707.002.28</b> |
|                                       |           | 51-100  | <b>707.002.48</b> |
| Gewindestift - <i>Set screw</i>       | M8x16     |         | <b>705.542</b>    |
| Vorschneider - <i>Scoring blade</i>   | 14x14x2   |         | <b>750.111</b>    |
| Spannschraube - <i>Clamping screw</i> | M5x8      |         | <b>705.425</b>    |
| Sechskantschlüssel - <i>Allen key</i> | SW4       |         | <b>706.104</b>    |
| Zwischenringsatz - <i>Spacer set</i>  |           | 16-30   | <b>703.036</b>    |
|                                       |           | 21-40   | <b>703.037</b>    |
|                                       |           | 31-60   | <b>703.038</b>    |
|                                       |           | 51-100  | <b>703.042</b>    |
| Einstelllehre - <i>Setting gauge</i>  |           | 0,3/0,8 | <b>717.309</b>    |





- Lösbarer Mitnahmestift  
*lock pin can be removed for individual use*

**WP-Fügefräser für Handvorschub**  
*Jointing cutter with reversible knives for manual feed*

MAN

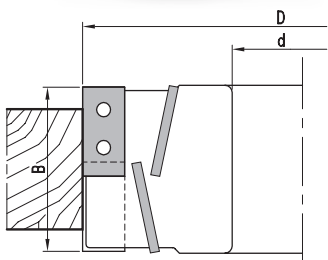
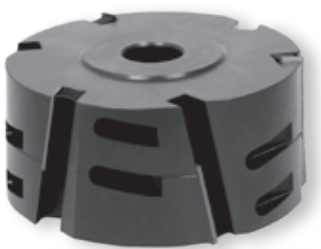
HW

| D   | B  | d        | Z | $n_{min} - n_{max}$ | Art. Nr.            |
|-----|----|----------|---|---------------------|---------------------|
| 80  | 50 | 45       | 4 | 9600-16000          | <b>5109.080.050</b> |
| 100 | 30 | 30/35    | 4 | 7800-13300          | <b>5109.100.030</b> |
|     | 50 | 30/35    | 4 | 7800-13300          | <b>5109.100.050</b> |
| 125 | 30 | 35/40/50 | 4 | 6200-10600          | <b>5109.125.030</b> |
|     | 50 | 35/40    | 4 | 6200-10600          | <b>5109.125.150</b> |
|     | 60 | 40/50    | 4 | 6200-10600          | <b>5109.125.060</b> |
|     | 80 | 40/50    | 4 | 6200-10600          | <b>5109.125.080</b> |

- Kombination von Einsatzfräsern zur gewünschten Hobelbreite möglich  
*possible to combine multiple insert cutters to achieve desired planing width*

**Wendemesser/Ersatzteile**  
*Reversible knives/Spare parts*

|                                       | Dim.        | B        | Art. Nr.          |
|---------------------------------------|-------------|----------|-------------------|
| Wendemesser - <i>Reversible knife</i> | 30x12x1,5   | 30       | <b>750.104</b>    |
|                                       | 50x12x1,5   | 50       | <b>750.106</b>    |
|                                       | 60x12x1,5   | 60       | <b>750.107</b>    |
|                                       | 80x13x2,2   | 80       | <b>750.108</b>    |
| Spannkeil - <i>Clamping wedge</i>     |             | 30       | <b>707.002.28</b> |
|                                       |             | 50 (D80) | <b>707.001.48</b> |
|                                       |             | 50       | <b>707.002.48</b> |
|                                       |             | 60       | <b>707.002.58</b> |
|                                       |             | 80       | <b>707.002.78</b> |
| Gewindestift - <i>Set screw</i>       | M6x12 (D80) |          | <b>705.533</b>    |
|                                       | M8x16       |          | <b>705.542</b>    |
| Sechskantschlüssel - <i>Allen key</i> | SW3 (M6)    |          | <b>706.103</b>    |
|                                       | SW4 (M8)    |          | <b>706.104</b>    |
| Einstellehre - <i>Setting gauge</i>   |             | 1,0      | <b>717.302</b>    |


**WP-Fügefräser mit wechselseitigem Achswinkel für Handvorschub**  
*Jointing cutter with alternating axial angle and reversible knives for manual feed*

MAN

HW

| D   | B  | d         | Z   | $n_{min} - n_{max}$ | Art. Nr.            |
|-----|----|-----------|-----|---------------------|---------------------|
| 100 | 56 | 30 DKN    | 3+3 | 7800-13300          | <b>5709.100.056</b> |
| 125 | 56 | 30/40 DKN | 3+3 | 6200-10600          | <b>5709.125.056</b> |

- Mit beidseitig ziehendem Schnitt  
*with alternating axial angle*

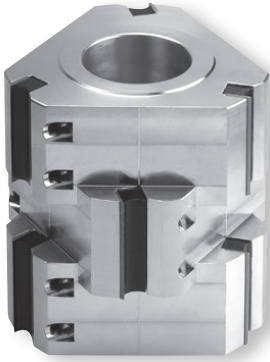
**Wendemesser/Ersatzteile**  
*Reversible knives/Spare parts*

|                                       | Dim.      | B   | Art. Nr.          |
|---------------------------------------|-----------|-----|-------------------|
| Wendemesser - <i>Reversible knife</i> | 30x12x1,5 | 30  | <b>752.102</b>    |
| Spannkeil - <i>Clamping wedge</i>     |           | RH  | <b>707.133.28</b> |
|                                       |           | LH  | <b>707.130.28</b> |
| Gewindestift - <i>Set screw</i>       | M8x16     |     | <b>705.542</b>    |
| Sechskantschlüssel - <i>Allen key</i> | SW4       |     | <b>706.104</b>    |
| Einstellehre - <i>Setting gauge</i>   |           | 1,0 | <b>717.302</b>    |

5904

**HW-Füge-Hobelfräser-Aufbausystem – Wendemesser**  
*TC Jointing Planer Cutter Assembly System - Reversible Knives*

PG  
02



**WP-Fügefräser für mechanischen Vorschub**  
*Jointing cutter with reversible knives for mechanical feed*

MEC

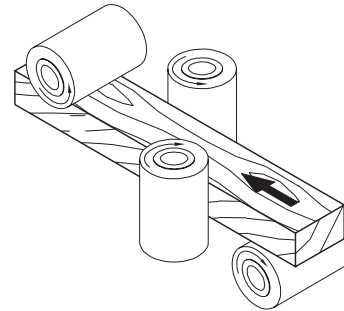
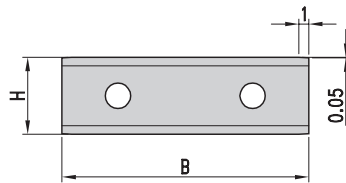
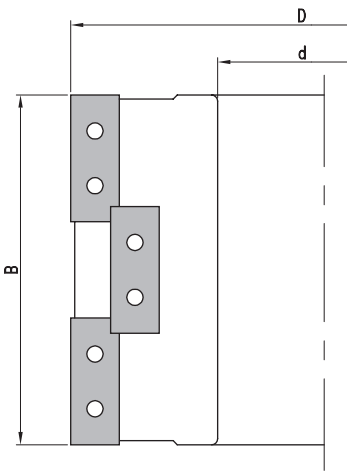
HW

| D   | B   | d  | Z     | n <sub>max</sub> | Art. Nr.       |
|-----|-----|----|-------|------------------|----------------|
| 125 | 130 | 40 | 3(9)  | 10200            | * 5904.125.130 |
|     | 230 | 40 | 3(15) | 10200            | * 5904.125.230 |

- \* Ausführung mit Leichtmetall-Grundkörper  
*featuring a light metal body*
- Kombination von Einzelfräsern zur gewünschten Hobelbreite möglich  
*possible to combine multiple insert cutters to achieve desired planing width*

**Wendemesser/Ersatzteile**  
*Reversible knives/Spare parts*

|                                | Dim.      | Art. Nr.   |
|--------------------------------|-----------|------------|
| Wendemesser - Reversible knife | 50x12x1,5 | 755.105    |
| Spannkeil - Clamping wedge     |           | 707.002.48 |
| Gewindestift - Set screw       | M8x16     | 705.542    |
| Sechskantschlüssel - Allen key | SW4       | 706.104    |
| Einstellehre - Setting gauge   | 1,0       | 717.302    |



8709

**HW-Füge-Hobelkopf – Festbestückt**  
*TC Jointing Planer Head - Tipped*

PG  
02

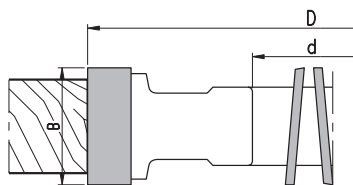


**HW-Fügefräser mit beidseitig ziehendem Schnitt für Handvorschub**  
*TC-tipped jointing cutter with alternating axial angle for manual feed*

MAN

HW

| D   | B  | d     | Z | n <sub>min</sub> - n <sub>max</sub> | Art. Nr.     |
|-----|----|-------|---|-------------------------------------|--------------|
| 140 | 30 | 30/50 | 4 | 5500-9500                           | 8709.140.030 |
|     | 50 | 30/50 | 4 | 5500-9500                           | 8709.140.050 |

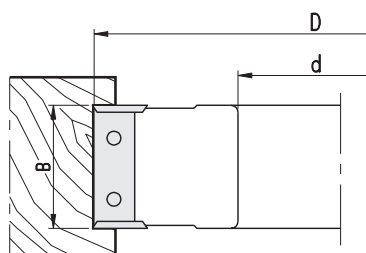



**WP-Falzmesserkopf, geradeverzahnt – Zum Fügen, Falzen und Nuten**  
*Rebate cutterhead, straight cut - for jointing, rebating, and grooving*

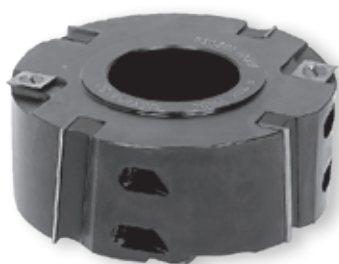
MAN

HW

| D   | B  | d     | Z | V | n <sub>min</sub> - n <sub>max</sub> | Art. Nr.            |
|-----|----|-------|---|---|-------------------------------------|---------------------|
| 100 | 50 | 30    | 2 | 4 | 7800-13300                          | <b>5169.100.050</b> |
|     | 50 | 30    | 4 | 4 | 7800-13300                          | <b>5169.100.150</b> |
| 125 | 30 | 30/50 | 2 | 4 | 6200-10600                          | <b>5169.125.030</b> |
|     | 30 | 30/50 | 4 | 4 | 6200-10600                          | <b>5169.125.130</b> |
|     | 50 | 30/50 | 2 | 4 | 6200-10600                          | <b>5169.125.050</b> |
|     | 50 | 30/50 | 4 | 4 | 6200-10600                          | <b>5169.125.150</b> |
|     | 60 | 30/50 | 2 | 4 | 6200-10600                          | <b>5169.125.060</b> |

**Wendemesser/Ersatzteile**
*Reversible knives/Spare parts*


|                                | Dim.      | B   | Art. Nr.          |
|--------------------------------|-----------|-----|-------------------|
| Wendemesser - Reversible knife | 30x12x1,5 | 30  | <b>750.104</b>    |
|                                | 50x12x1,5 | 50  | <b>750.106</b>    |
|                                | 60x12x1,5 | 60  | <b>750.107</b>    |
| Spannkeil - Clamping wedge     |           | 30  | <b>707.002.28</b> |
|                                |           | 50  | <b>707.002.48</b> |
|                                |           | 60  | <b>707.002.58</b> |
| Gewindestift - Set screw       | M8x16     |     | <b>705.542</b>    |
| Vorschneider - Scoring blade   | 14x14x2   |     | <b>750.111</b>    |
| Spannschraube - Clamping screw | M5x8      |     | <b>705.425</b>    |
| Sechskantschlüssel - Allen key |           |     | <b>706.104</b>    |
| Einstelllehre - Setting gauge  |           | 1,0 | <b>717.302</b>    |

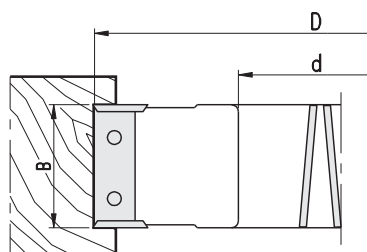

**WP-Falzmesserkopf mit wechselseitigem Achswinkel – Zum Fügen, Falzen und Nuten**  
*Rebate cutterhead with reversible knives - for jointing, rebating, and grooving*

MAN

HW

| D   | B  | d     | Z | V | n <sub>min</sub> - n <sub>max</sub> | Art. Nr.            |
|-----|----|-------|---|---|-------------------------------------|---------------------|
| 125 | 50 | 30/50 | 4 | 4 | 6200-10600                          | <b>5769.125.050</b> |
| 140 | 50 | 30/50 | 4 | 4 | 5500-9500                           | <b>5769.140.050</b> |
| 147 | 50 | 40    | 4 | 4 | 5200-9000                           | <b>5769.147.050</b> |

- Mit beidseitig ziehendem Schnitt
- with alternating axial angle

**Wendemesser/Ersatzteile**
*Reversible knives/Spare parts*


|                                | Dim.      | B       | Art. Nr.          |
|--------------------------------|-----------|---------|-------------------|
| Wendemesser - Reversible knife | 50x12x1,5 | 50      | <b>750.106</b>    |
| Spannkeil - Clamping wedge     | RH        |         | <b>707.133.48</b> |
|                                | LH        |         | <b>707.130.48</b> |
| Gewindestift - Set screw       | M8x16     |         | <b>705.542</b>    |
| Vorschneider - Scoring blade   | 14x14x2   |         | <b>750.111</b>    |
| Spannschraube - Clamping screw | M5x8      |         | <b>705.425</b>    |
| Sechskantschlüssel - Allen key | SW4       |         | <b>705.104</b>    |
| Einstelllehre - Setting gauge  |           | 0,3x0,8 | <b>717.309</b>    |

8769

**HW-Falzfräser mit Vorschneidern – Festbestückt**  
*TC Rebating Cutter with Scoring Blades - Tipped*

PG  
02

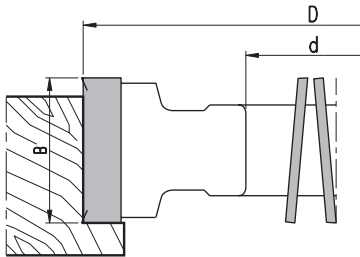


**HW-Falzmesserkopf mit wechselseitigem Achswinkel – Zum Fügen, Falzen und Nuten**  
*TC rebating cutterhead with alternating axial angle - for jointing, rebating, and grooving*

MAN

HW

| D   | B  | d     | Z | V | n <sub>min</sub> - n <sub>max</sub> | Art. Nr.            |
|-----|----|-------|---|---|-------------------------------------|---------------------|
| 140 | 30 | 30/50 | 4 | 4 | 5500-9500                           | <b>8769.140.030</b> |
|     | 50 | 30/50 | 4 | 4 | 5500-9500                           | <b>8769.140.050</b> |



5160

**HW-Führungsfalzfräser mit Vorschneidern – Wendemesser**  
*TC Guided Rebating Cutter - Reversible Knives*

PG  
02



**WP-Falzmesserkopf, geradeverzahnt – Zum Fügen, Falzen und Nuten**  
*Rebate cutterhead, straight cut - for jointing, rebating, and grooving*

MEC

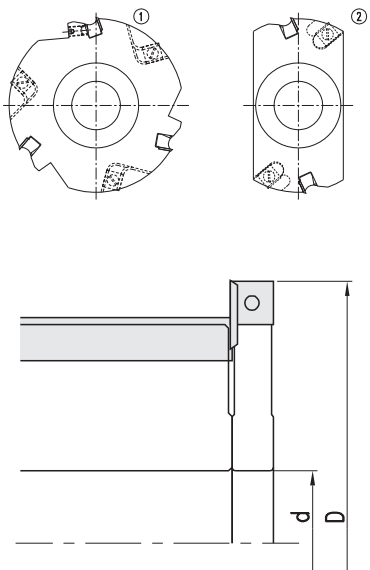
HW

| Nr. | D   | B  | d  | Z | V | n <sub>max</sub> | Art. Nr.            |
|-----|-----|----|----|---|---|------------------|---------------------|
| 1   | 145 | 12 | 40 | 3 | 3 | 11000            | <b>5160.145.003</b> |
| 2   | 145 | 12 | 40 | 2 | 2 | 11000            | <b>5160.145.002</b> |

- Ausführung für WP-Spiralmesserkopf D140
- for helical cutterhead type D140

**Wendemesser/Ersatzteile**  
*Reversible knives/Spare parts*

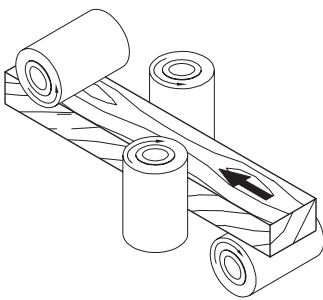
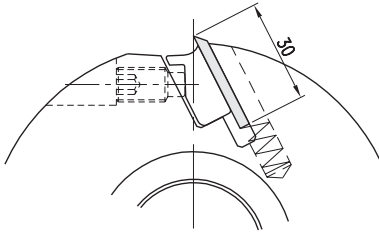
|                                | Dim.        | B       | Art. Nr.          |
|--------------------------------|-------------|---------|-------------------|
| Wendemesser - Reversible knife | 12x12x1,5   | 12      | <b>754.102</b>    |
|                                | 17,6x12x1,5 | 18      | <b>750.205</b>    |
| Spannkeil - Clamping wedge     |             | 12      | <b>707.002.10</b> |
| Gewindestift - Set screw       | M8x16       |         | <b>705.542</b>    |
| Vorschneider - Scoring blade   | 14x14x2     |         | <b>750.111</b>    |
| Spannschraube - Clamping screw | M5x8        |         | <b>705.425</b>    |
| Sechskantschlüssel - Allen key | SW4         |         | <b>706.104</b>    |
| Einstellehre - Setting gauge   |             | 0,3/0,8 | <b>717.309</b>    |





Auslieferung: inklusive Hobelmesser  
 HS 18%, HW-Messer auf Wunsch erhältlich.

*delivery includes 18% HSS planer blades,  
 TC blades available on request*


**Hobelmesserkopf für Streifenhobelmesser**  
*Planer cutterhead for strip planer blades*
**MAN** **HW/HS**

| D   | B   | d  | Z | $n_{max}$ | Art. Nr. *            | Art. Nr.            |
|-----|-----|----|---|-----------|-----------------------|---------------------|
| 125 | 80  | 40 | 4 | 9000      | <b>0104.125.080</b> * | <b>0104.125.081</b> |
|     | 100 | 40 | 4 | 9000      | <b>0104.125.100</b> * | <b>0104.125.101</b> |
|     | 120 | 40 | 4 | 9000      | <b>0104.125.120</b> * | <b>0104.125.121</b> |
|     | 130 | 40 | 4 | 9000      | <b>0104.125.130</b> * | <b>0104.125.131</b> |
|     | 150 | 40 | 4 | 9000      | <b>0104.125.150</b> * | <b>0104.125.151</b> |
|     | 180 | 40 | 4 | 9000      | <b>0104.125.180</b> * | <b>0104.125.181</b> |
|     | 220 | 40 | 4 | 9000      | <b>0104.125.220</b> * | <b>0104.125.221</b> |
|     | 230 | 40 | 4 | 9000      | <b>0104.125.230</b> * | <b>0104.125.231</b> |
|     | 240 | 40 | 4 | 9000      | <b>0104.125.240</b> * | <b>0104.125.241</b> |

\* Ausführung mit Leichtmetall-Grundkörper

\* *featuring a light metal body*

- Klemmung mit Druckbackensystem
- Messerpositionierung erfolgt über Druckfedern unter den Streifenhobelmessern
- Positionierung über die Einstelllehre
- *blades are clamped with wedges*
- *blade positioning is guided by compression springs beneath strip planer blades*
- *precise alignment using setting gauge*

**Ersatzteile**
*Spare parts*

|                                       | Dim.   | B   | Art. Nr.       |
|---------------------------------------|--------|-----|----------------|
| Spannkeil - <i>Clamping wedge</i>     |        | 80  | <b>707.432</b> |
|                                       |        | 100 | <b>707.433</b> |
|                                       |        | 120 | <b>707.434</b> |
|                                       |        | 130 | <b>707.435</b> |
|                                       |        | 150 | <b>707.436</b> |
|                                       |        | 180 | <b>707.437</b> |
|                                       |        | 220 | <b>707.438</b> |
|                                       |        | 230 | <b>707.439</b> |
| Feder - <i>Spring</i>                 |        |     | <b>709.122</b> |
| Gewindestift - <i>Set screw</i>       | M10x20 |     | <b>705.552</b> |
| Sechskantschlüssel - <i>Allen key</i> | SW5    |     | <b>706.105</b> |

**Streifenhobelmesser**
*Strip planer blades*

| B   | H  | d | Art. Nr. HS       | Art. Nr. HW       |
|-----|----|---|-------------------|-------------------|
| 80  | 30 | 3 | <b>771.080.30</b> | <b>773.080.30</b> |
| 100 | 30 | 3 | <b>771.100.30</b> | <b>773.100.30</b> |
| 120 | 30 | 3 | <b>771.120.30</b> | <b>773.120.30</b> |
| 130 | 30 | 3 | <b>771.130.30</b> | <b>773.130.30</b> |
| 150 | 30 | 3 | <b>771.150.30</b> | <b>773.150.30</b> |
| 170 | 30 | 3 | <b>771.170.30</b> | <b>773.170.30</b> |
| 180 | 30 | 3 | <b>771.180.30</b> | <b>773.180.30</b> |
| 200 | 30 | 3 | <b>771.200.30</b> | <b>773.200.30</b> |
| 220 | 30 | 3 | <b>771.220.30</b> | <b>773.220.30</b> |
| 230 | 30 | 3 | <b>771.230.30</b> | <b>773.230.30</b> |

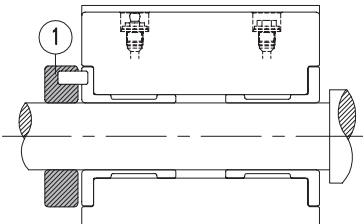
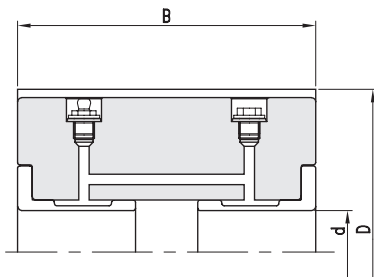


**WP-Messerkopf aus Leichtmetall**  
*Light metal cutterhead with reversible knives*

MEC

HW

| D   | B   | d  | Spir. | n <sub>max</sub> | Art. Nr.       |
|-----|-----|----|-------|------------------|----------------|
| 163 | 150 | 50 | 6     | 8000             | * 5101.163.150 |
|     | 180 | 50 | 6     | 8000             | * 5101.163.180 |
|     | 230 | 50 | 6     | 8000             | * 5101.163.230 |
|     | 260 | 50 | 6     | 8000             | * 5101.163.260 |
|     | 310 | 50 | 6     | 8000             | * 5101.163.310 |
| 185 | 410 | 50 | 6     | 7000             | * 5101.185.410 |
| 200 | 150 | 60 | 10    | 6500             | * 5101.200.150 |
|     | 180 | 60 | 10    | 6500             | * 5101.200.180 |
|     | 230 | 60 | 10    | 6500             | * 5101.200.230 |
|     | 260 | 60 | 10    | 6500             | * 5101.200.260 |
|     | 310 | 60 | 12    | 6500             | * 5101.200.310 |
| 230 | 150 | 50 | 12    | 5700             | * 5101.230.150 |



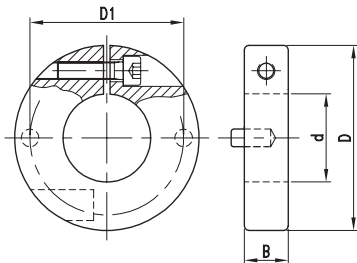
- \* Ausführung mit Leichtmetall-Grundkörper
- \* featuring a light metal body

- WP-Messerkopf mit vierseitig schneidenden Wendepplatten und integriertem, offenem Hydro-Spannsystem für Fettpresse
- Hydrosystem als Zentrier-Spannsystem bei Betriebsdruck von ca. 300-400 bar (tägliche Kontrolle empfohlen)
- Gewendelte Hochleistungsausführung:  
 Reduziert die Leistungsaufnahme im Vergleich zu geradeverzahnten Hobelköpfen erheblich, daher ist bei Bedarf eine größere Spanabnahme möglich  
 Minimiert das Hobelgeräusch und sorgt für glatte Hobeloberflächen durch den Einsatz verrundeter Wendepplatten  
 Vielfach bewährter Einsatz auf Vorhobel- und Bauholz-Fertighobelwellen

- cutterhead with four-sided indexable sheets and integrated open hydro clamping system for grease gun
- hydro system functions as centering clamping system at an operating pressure of approx. 300 to 400 bar (daily check recommended)
- helical high-performance design:  
 significantly reduces power consumption compared to straight-toothed planer heads, allowing for larger chip removal when necessary  
 minimises planing noise and ensures smooth planed surfaces by using rounded indexable sheets  
 tried and proven use on pre-planing and timber production planer shafts

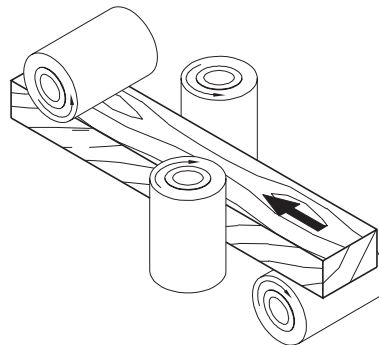
Zur Sicherung Spindelklemmring verwenden ①

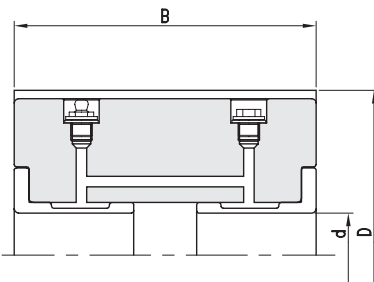
always use safety ring when setting up the cutter ①



**Wendemesser/Ersatzteile**  
*Reversible knives/Spare parts*

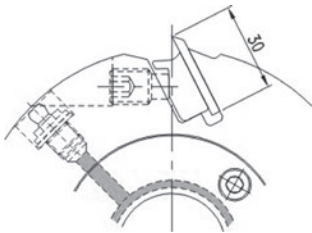
|  | Dim.      | Art. Nr.   |
|--|-----------|------------|
| Wendemesser, ballig - Reversible knife rounded | 15x15x2,5 | 754.106    |
| Spannschraube - Clamping screw                 | M5x13     | 705.320.13 |
| Torx Schlüssel - Torx wrench                   | T20       | 706.305    |





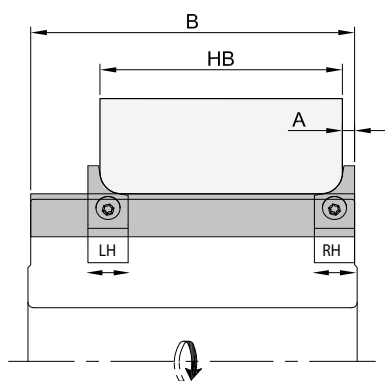
Schema gültig bis Z=12, ab Z=16  
Schmiernippel stirnseitig

*schema valid up to Z=12; from Z=16,  
grease nipples are on front side*


**Hydro-Hobelmesserkopf mit Streifenhobelmesser**  
*Hydro planer cutterhead with strip planer blades*
**MEC**
**HS**

| D   | B   | d  | Z  | n <sub>max</sub> | Art. Nr.            |
|-----|-----|----|----|------------------|---------------------|
| 143 | 60  | 40 | 4  | 9000             | <b>0101.143.060</b> |
|     | 100 | 40 | 4  | 9000             | <b>0101.143.100</b> |
|     | 130 | 40 | 4  | 9000             | <b>0101.143.130</b> |
|     | 150 | 40 | 4  | 9000             | <b>0101.143.150</b> |
|     | 180 | 40 | 4  | 9000             | <b>0101.143.180</b> |
|     | 230 | 40 | 4  | 9000             | <b>0101.143.230</b> |
| 143 | 60  | 40 | 6  | 9000             | <b>0101.143.061</b> |
|     | 100 | 40 | 6  | 9000             | <b>0101.143.101</b> |
|     | 130 | 40 | 6  | 9000             | <b>0101.143.131</b> |
|     | 150 | 40 | 6  | 9000             | <b>0101.143.151</b> |
|     | 180 | 40 | 6  | 9000             | <b>0101.143.181</b> |
|     | 230 | 40 | 6  | 9000             | <b>0101.143.231</b> |
| 163 | 60  | 50 | 4  | 8000             | <b>0101.163.060</b> |
|     | 100 | 50 | 4  | 8000             | <b>0101.163.100</b> |
|     | 130 | 50 | 4  | 8000             | <b>0101.163.130</b> |
|     | 150 | 50 | 4  | 8000             | <b>0101.163.150</b> |
|     | 180 | 50 | 4  | 8000             | <b>0101.163.180</b> |
|     | 230 | 50 | 4  | 8000             | <b>0101.163.230</b> |
| 163 | 60  | 50 | 6  | 8000             | <b>0101.163.061</b> |
|     | 100 | 50 | 6  | 8000             | <b>0101.163.101</b> |
|     | 130 | 50 | 6  | 8000             | <b>0101.163.131</b> |
|     | 150 | 50 | 6  | 8000             | <b>0101.163.151</b> |
|     | 180 | 50 | 6  | 8000             | <b>0101.163.181</b> |
|     | 230 | 50 | 6  | 8000             | <b>0101.163.231</b> |
| 163 | 60  | 50 | 8  | 8000             | <b>0101.163.062</b> |
|     | 100 | 50 | 8  | 8000             | <b>0101.163.102</b> |
|     | 130 | 50 | 8  | 8000             | <b>0101.163.132</b> |
|     | 150 | 50 | 8  | 8000             | <b>0101.163.152</b> |
|     | 180 | 50 | 8  | 8000             | <b>0101.163.182</b> |
|     | 230 | 50 | 8  | 8000             | <b>0101.163.232</b> |
| 203 | 60  | 50 | 12 | 6000             | <b>0101.203.060</b> |
|     | 100 | 50 | 12 | 6000             | <b>0101.203.100</b> |
|     | 130 | 50 | 12 | 6000             | <b>0101.203.130</b> |
|     | 150 | 50 | 12 | 6000             | <b>0101.203.150</b> |
|     | 180 | 50 | 12 | 6000             | <b>0101.203.180</b> |
|     | 230 | 50 | 12 | 6000             | <b>0101.203.230</b> |

- Auslieferung inkl. Hobelmesser HS 18%
- Messerkopf aus Stahl mit offenem Hydrospannsystem:  
Bestückung mit HS-Streifenhobelmessern inklusive  
Hydrosystem als Zentrierspannsystem bei Betriebsdruck von ca. 300-400 bar (tägliche Kontrolle empfohlen)
- *delivery includes HSS 18% planer blades*
- *steel cutterhead with open hydro clamping system for grease gun:  
HSS strip planer blades included  
hydro system functions as centering clamping system at an operating pressure of 300 to 400 bar  
(daily check recommended)*



|           | HB<br>min | HB<br>min | A   |
|-----------|-----------|-----------|-----|
| R2-6/45°  | 17        | B-14      | 7   |
| R8-10/45° | 22        | B-9       | 4,5 |

- Verstellbarkeit der Holzstärke  
*adjustment range of wood thickness*

**Werkzeugsystem für CentroLock-Wendemesser zum Abrunden oder Anfasen**  
*Tool system for CentroLock reversible knives for rounding or chamfering*

MEC

HW/HS

| D   | B   | d  | Z | C   | n <sub>max</sub> | Art.Nr.             |
|-----|-----|----|---|-----|------------------|---------------------|
| 125 | 130 | 40 | 2 | 2+2 | 9000             | <b>1214.125.130</b> |
|     | 180 | 40 | 2 | 2+2 | 9000             | <b>1214.125.180</b> |
|     | 240 | 40 | 2 | 2+2 | 9000             | <b>1214.125.240</b> |

- Werkzeugsystem für CentroLock-Wendemesser mit verschiebbaren Zusatzschneiden/Gleitschuhen zum Abrunden oder Anfasen. Zusatzschneiden verfügbar zum Abrunden R=2 bis R=10 bzw. 45° Anfasen. Einstellung der abzurundenden Holzbreite über Verschieben der Gleitschuhe auf der metrischen Laserskala.
- Lieferung des Hobelkopfs erfolgt inklusive HS-CentroLock-Wendemessern. Radius-Fasermesser bitte nach Bedarf bestellen (nicht beinhaltet).
- *Tool system for CentroLock reversible knives with adjustable cutters/ sliding blocks for rounding or chamfering. Additional cutters available for rounding R=2 to R=10 or 45° chamfering; rounding width is adjustable by moving the sliding block along the metric laser scale.*
- *Planer head supplied with HSS CentroLock reversible knives. Please order additional sliding blocks and radius chamfering knives as needed (not included).*

**Wendemesser/Ersatzteile**  
*Reversible knives/Spare parts*

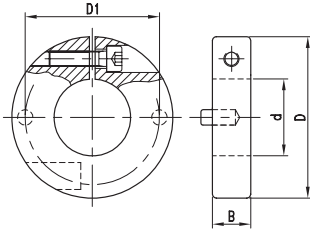
|  | R/ ↘ | Dim.    | Art.Nr. LH        | Art. Nr. RH       |
|--|------|---------|-------------------|-------------------|
| Radius-Fasermesser - Radius chamfering knife | 2    | 15x20x2 | <b>765.587.12</b> | <b>765.587.02</b> |
|  | 3    | 15x20x2 | <b>765.587.13</b> | <b>765.587.03</b> |
|  | 4    | 15x20x2 | <b>765.587.14</b> | <b>765.587.04</b> |
|  | 5    | 15x20x2 | <b>765.587.15</b> | <b>765.587.05</b> |
|  | 6    | 15x20x2 | <b>765.587.16</b> | <b>765.587.06</b> |
|  | 45°  | 15x20x2 | <b>765.587.55</b> | <b>765.587.45</b> |
|  | 8    | 15x23x2 | <b>765.587.18</b> | <b>765.587.08</b> |
|  | 10   | 15x23x2 | <b>765.587.20</b> | <b>765.587.10</b> |
|  | 45°  | 15x23x2 | <b>765.587.56</b> | <b>765.587.46</b> |

**Gleitschuhe**  
*Sliding blocks*

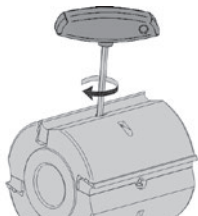
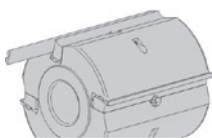
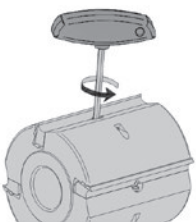
| R/ ↘     | Art.Nr. LH        | Art. Nr. RH       |
|----------|-------------------|-------------------|
| 2-6/45°  | <b>709.587.01</b> | <b>709.587.11</b> |
| 8-10/45° | <b>709.587.02</b> | <b>709.587.12</b> |

**Wendehobelmesser**  
*Reversible planer knives*

| Dim.                                      | Art.Nr. HS         | Art. Nr. HW        |
|---|--------------------|--------------------|
| CentroLock HS/HW-Hobelmesser - CentroLock | <b>776.130.016</b> | <b>796.130.016</b> |
| HSS/TC planer knife                       | <b>776.180.016</b> | <b>796.180.016</b> |
| 240x16x3                                  | <b>776.240.016</b> | <b>796.240.016</b> |


**Ersatzteile**  
*Spare parts*

|   | Dim.   | B   | Art. Nr.       |
|---|--------|-----|----------------|
| Spannkeil - <i>Clamping wedge</i>       |        | 100 | <b>707.433</b> |
|   |        | 120 | <b>707.434</b> |
|   |        | 130 | <b>707.435</b> |
|   |        | 150 | <b>707.436</b> |
|   |        | 180 | <b>707.437</b> |
|   |        | 220 | <b>707.438</b> |
|   |        | 230 | <b>707.439</b> |
| Gewindestift - <i>Set screw</i>         | M12x20 |     | <b>705.556</b> |
|   | M10x20 |     | <b>705.552</b> |
| Sechskantschlüssel - <i>Allen key</i>   | SW6    |     | <b>706.106</b> |
| Fettpumpe - <i>Grease gun</i>           |        |     | <b>724.401</b> |
| Fettkartusche - <i>Grease cartridge</i> |        |     | <b>724.402</b> |
| Klemmring - <i>Safety ring</i>          |        |     | <b>724.404</b> |


 Klemmbalken lösen  
*release clamping bar*

 Messer wechseln  
*change knife*

 Klemmbalken spannen  
*tighten clamping bar*
**HS-Hobelkopf CentroLock**  
*HSS planer head CentroLock*

MEC

HS

| D   | B   | d  | Z | n <sub>max</sub> | Art. Nr.            |
|-----|-----|----|---|------------------|---------------------|
| 125 | 80  | 40 | 4 | 10000            | <b>1104.125.080</b> |
|     | 100 | 40 | 4 | 10000            | <b>1104.125.100</b> |
|     | 130 | 40 | 4 | 10000            | <b>1104.125.130</b> |
|     | 150 | 40 | 4 | 10000            | <b>1104.125.150</b> |
|     | 180 | 40 | 4 | 10000            | <b>1104.125.180</b> |
|     | 230 | 40 | 4 | 10000            | <b>1104.125.230</b> |
|     | 240 | 40 | 4 | 10000            | <b>1104.125.240</b> |

- Auslieferung inkl. CentroLock HS-Messer
- Werkzeugsystem für CentroLock-Messer mit fliehkräftunterstützter, formschlüssiger Messerspannung Ermöglicht das Nachschärfen der CentroLock-Messer (Nachschärfzone ca. 1 mm pro Seite) Garantiert exakte Durchmesser Konstanz nach jedem Schärfen
- Wendehobelmesser in HS und HW mit unterschiedlicher Körnung verfügbar
- *supplied with CentroLock HSS knives*
- *tool system for CentroLock blades with centrifugal, form-fit clamping allows resharpening of CentroLock knives (approx. 1 mm each side) with precise diameter consistency after each sharpening*
- *reversible planer knives are available in HSS or TC with various grit grades*

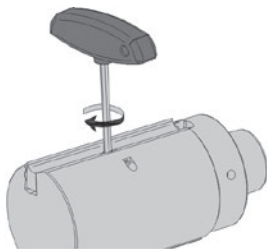
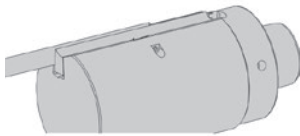
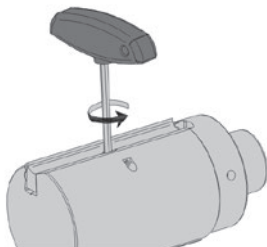
**Ersatzteile**  
*Spare parts*

|  | Dim.     | Art. Nr.           |
|--|----------|--------------------|
| CentroLock HS-Hobelmesser - <i>CentroLock HSS planer knife</i> | 80x16x3  | <b>776.080.016</b> |
|  | 100x16x3 | <b>776.100.016</b> |
|  | 130x16x3 | <b>776.130.016</b> |
|  | 150x16x3 | <b>776.150.016</b> |
|  | 180x16x3 | <b>776.180.016</b> |
|  | 230x16x3 | <b>776.230.016</b> |
|  | 240x16x3 | <b>776.240.016</b> |


**HSK85WS-Hobelkopf Z=2**  
*HSK85WS planer head Z=2*
**MEC****HS**

| D  | B   | d       | Z | n <sub>max</sub> | Art. Nr. LH         | Art. Nr. RH         |
|----|-----|---------|---|------------------|---------------------|---------------------|
| 93 | 60  | HSK85WS | 2 | 12000            | <b>1402.093.060</b> | <b>1402.093.061</b> |
|    | 80  | HSK85WS | 2 | 12000            | <b>1402.093.080</b> | <b>1402.093.081</b> |
|    | 100 | HSK85WS | 2 | 12000            | <b>1402.093.100</b> | <b>1402.093.101</b> |
|    | 130 | HSK85WS | 2 | 12000            | <b>1402.093.130</b> | <b>1402.093.131</b> |
|    | 150 | HSK85WS | 2 | 12000            | <b>1402.093.150</b> | <b>1402.093.151</b> |
|    | 170 | HSK85WS | 2 | 12000            | <b>1402.093.170</b> | <b>1402.093.171</b> |
|    | 240 | HSK85WS | 2 | 12000            | <b>1402.093.240</b> | <b>1402.093.241</b> |

- Hobelmesserkopf zum Einsatz auf Vierseiten-Hobel- und Profiliermaschinen mit HSK85WS Schnittstelle. Bestückt mit HS-CentroLock-Wendemessern. Monoblock-Ausführung mit hoher Wuchtgüte für eine maximale Drehzahl von 12.000 U/min.
- Betrieb in Kombination mit Abrund- oder Fasefräser auf Anfrage
- Werkzeugsystem für CentroLock-Messer mit fliehkräftunterstützter, formschlüssiger Messerspannung. Ermöglicht das Nachschärfen der CentroLock-Messer (Nachschärfzone ca. 1 mm pro Seite). Garantiert exakte Durchmesser Konstanz nach jedem Schärfen. Wendehobelmesser in HS und HW mit unterschiedlicher Körnung verfügbar
- *Planer cutterhead for use on four-sided planer and profiling machines with HSK85WS interface. Supplied with HSS CentroLock reversible knives. Monoblock design with high balancing quality for a maximum speed of 12,000 rpm.*
- *operation in combination with rounding or chamfer cutter available on request*
- *tool system for CentroLock reversible knives with centrifugal, form-fit clamping allows resharpening of CentroLock knives (approx. 1 mm each side) with precise diameter consistency after each sharpening*
- *reversible planer knives are available in HSS and TC with various grit grades*


**Klemmbalken lösen**  
*release clamping bar*

**Messer wechseln**  
*change knife*

**Klemmbalken spannen**  
*tighten clamping bar*

**HSK85WS-Hobelkopf Z=4**  
*HSK85WS planer head Z=4*
**MEC****HS**

| D  | B   | d       | Z | n <sub>max</sub> | Art. Nr. LH         | Art. Nr. RH         |
|----|-----|---------|---|------------------|---------------------|---------------------|
| 93 | 60  | HSK85WS | 4 | 12000            | <b>1402.093.062</b> | <b>1402.093.063</b> |
|    | 80  | HSK85WS | 4 | 12000            | <b>1402.093.082</b> | <b>1402.093.083</b> |
|    | 100 | HSK85WS | 4 | 12000            | <b>1402.093.102</b> | <b>1402.093.103</b> |
|    | 130 | HSK85WS | 4 | 12000            | <b>1402.093.132</b> | <b>1402.093.133</b> |
|    | 150 | HSK85WS | 4 | 12000            | <b>1402.093.152</b> | <b>1402.093.153</b> |
|    | 170 | HSK85WS | 4 | 12000            | <b>1402.093.172</b> | <b>1402.093.173</b> |
|    | 240 | HSK85WS | 4 | 12000            | <b>1402.093.242</b> | <b>1402.093.243</b> |

**Wir bieten drei verschiedene HSK85WS-Werkzeug-Ausführungen an:**

1. HSK85WS-Werkzeuge mit Monoblock-Tragkörper
2. HSK85WS-Werkzeuge mit unlösbar adaptiertem Hohlchaftkegel HSK85WS
3. Aufnahmedorne HSK85WS zum Spannen von Bohrungswerkzeugen

Ermöglicht den Einsatz vorhandener Werkzeuge mit Bohrung auf PowerMat-Maschinen

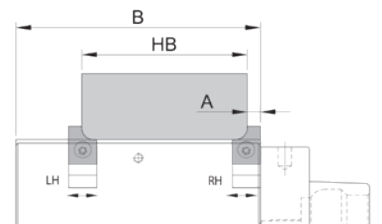
Auf Wunsch fertigen wir HSK85WS-Hobelmesserköpfe mit rückenverzahnten Hobelmessern in Stärken von 4 mm bis 8 mm als Monoblock-Ausführung mit hoher Wuchtgüte.

**We offer three different HSK80WS tool versions:**

1. HSK85WS tools with monoblock body
2. HSK85WS tools with permanently mounted HSK85WS taper adapter
3. HSK85WS arbors for clamping bore-type tools

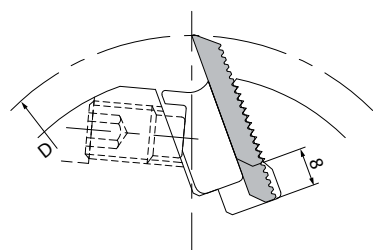
enables the use of existing bore-type tools on PowerMat machines

Upon request, we produce HSK85WS planer heads with back-serrated planer blades in thicknesses from 4 mm to 8 mm, in monoblock design with high balancing quality.

**1202****HW-/HS-Hobelkopf HSK85WS – Wendemesser**  
TC/HSS Planer Head HSK85WS - Reversible Knives**PG  
02****HSK85WE-Hobelkopf Z=2**  
HSK85WE planer head Z=2**MEC****HS**

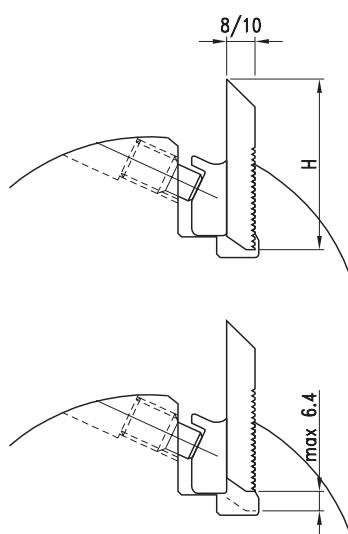
| D  | B   | d       | Z | C   | n <sub>max</sub> | Art. Nr. LH         | Art. Nr. RH         |
|----|-----|---------|---|-----|------------------|---------------------|---------------------|
| 93 | 130 | HSK85WS | 2 | 2+2 | 12000            | <b>1202.093.130</b> | <b>1202.093.131</b> |
|    | 190 | HSK85WS | 2 | 2+2 | 12000            | <b>1202.093.190</b> | <b>1202.093.191</b> |
|    | 240 | HSK85WS | 2 | 2+2 | 12000            | <b>1202.093.240</b> | <b>1202.093.241</b> |

- Zum Hobeln von Massivholz in der Schrapp- und Schlichtbearbeitung mit geringer Spanabnahme
- Ermöglicht die Montage von Messern mit verschiedenen Radien, Fasen, Nuten oder Profilen und kann als Multifunktionswerkzeug zum Hobeln und Profilieren eingesetzt werden
- *for planing solid wood in roughing and finishing operations with low chip removal*
- *allows assembly of knives with various radii, chamfers, grooves or profiles and can be used as a multi-functional tool for planing and profiling*

**2812****HW-/HS-Hobelkopf HSK85WS**  
TC/HSS Planer Head HSK85WS**PG  
02****HSK85WS-Hobelkopf Z=2**  
HSK85WS planer head Z=2**MEC****HS**

| D   | B   | S        | Z | n <sub>max</sub> | Art. Nr. LH         | Art. Nr. RH         |
|-----|-----|----------|---|------------------|---------------------|---------------------|
| 106 | 130 | HSK 85WS | 2 | 12000            | <b>2812.106.230</b> | <b>2812.106.130</b> |
|     | 180 | HSK 85WS | 2 | 12000            | <b>2812.106.480</b> | <b>2812.106.380</b> |
|     | 230 | HSK 85WS | 2 | 12000            | <b>2812.106.330</b> | <b>2812.106.230</b> |
| 106 | 130 | HSK 85WS | 4 | 12000            | <b>2812.106.680</b> | <b>2812.106.580</b> |
|     | 180 | HSK 85WS | 4 | 12000            | <b>2812.106.280</b> | <b>2812.106.180</b> |
|     | 230 | HSK 85WS | 4 | 12000            | <b>2812.106.530</b> | <b>2812.106.430</b> |
| 128 | 130 | HSK 85WS | 6 | 10000            | <b>2812.106.228</b> | <b>2812.106.128</b> |
|     | 180 | HSK 85WS | 6 | 10000            | <b>2812.128.280</b> | <b>2812.128.180</b> |
|     | 230 | HSK 85WS | 6 | 8000             | <b>2812.128.320</b> | <b>2812.128.230</b> |

- Zum Hobeln von Massivholz in der Schrapp- und Schlichtbearbeitung mit geringer Spanabnahme
- *for planing solid wood in roughing and finishing operations with low chip removal*



| H  | Pt <sub>max</sub> |        |
|----|-------------------|--------|
|    | HS                | HW     |
| 50 | 20                | 20     |
| 60 | 28                | 20/25* |
| 70 | 38                | 24/35* |

\*System Mikroverzahnung

\*micro-serrated system

Monoblock-Profilmesserkopf für universelles Profilieren auf Kehlmaschinen HSK85WS Schnittstelle  
 Monoblock profile cutterhead for profiling on moulders with HSK85WS interface

**MEC**
**HW**

| D   | B       | S       | Z       | n <sub>max</sub> |              | Art. Nr. LH  | Art. Nr. RH  |              |
|-----|---------|---------|---------|------------------|--------------|--------------|--------------|--------------|
| 90  | 60      | HSK85WS | 2       | 12000            | ●            | 2412.090.060 | 2412.090.160 |              |
|     | 80      | HSK85WS | 2       | 12000            | ●            | 2412.090.080 | 2412.090.180 |              |
|     | 100     | HSK85WS | 2       | 12000            | ●            | 2412.090.100 | 2421.090.200 |              |
|     | 130     | HSK85WS | 2       | 12000            | ●            | 2412.090.130 | 2412.090.230 |              |
|     | 150     | HSK85WS | 2       | 12000            | ●            | 2412.090.150 | 2412.090.250 |              |
|     | 170     | HSK85WS | 2       | 12000            | ●            | 2412.090.170 | 2412.090.270 |              |
|     | 210     | HSK85WS | 2       | 12000            | ●            | 2412.090.210 | 2412.090.310 |              |
|     | 240     | HSK85WS | 2       | 12000            | ●            | 2412.090.240 | 2412.090.340 |              |
| 90  | 60      | HSK85WS | 4       | 12000            | ●            | 2412.090.062 | 2412.090.162 |              |
|     | 80      | HSK85WS | 4       | 12000            | ●            | 2412.090.082 | 2412.090.182 |              |
|     | 100     | HSK85WS | 4       | 12000            | ●            | 2412.090.102 | 2412.090.202 |              |
|     | 130     | HSK85WS | 4       | 12000            | ●            | 2412.090.132 | 2412.090.232 |              |
|     | 170     | HSK85WS | 4       | 12000            | ●            | 2412.090.172 | 2412.090.272 |              |
|     | 240     | HSK85WS | 4       | 12000            | ●            | 2412.090.242 | 2412.090.342 |              |
|     | 115     | 60      | HSK85WS | 6                | 10000        | ●            | 2412.115.061 | 2412.115.060 |
|     |         | 80      | HSK85WS | 6                | 10000        | ●            | 2412.115.081 | 2412.115.080 |
| 100 |         | HSK85WS | 6       | 10000            | ●            | 2412.115.101 | 2412.115.100 |              |
| 130 |         | HSK85WS | 6       | 10000            | ●            | 2412.115.130 | 2412.115.230 |              |
| 170 |         | HSK85WS | 6       | 10000            | ●            | 2412.115.171 | 2412.115.170 |              |
| 240 | HSK85WS | 6       | 8000    | ●                | 2412.115.241 | 2412.115.240 |              |              |

- Ohne rückenverzahnte Hobelmesser
- cutterhead supplied without back-serrated planer knives
- Bei Verwendung der Standard-Spannkeile passen rückenverzahnte (RVZ) Messer mit einer Stärke von 8 mm bis 10 mm
- Zum Spannen von schwächeren RVZ-Messern sind Sonder-Spannkeile zu verwenden
- Bearbeitung abrasiver Werkstoffe durch die Verwendung des verschleißfesten HW-Massiv-Messersystems mit Mikroverzahnung. Siehe Kapitel 10: Ersatzteile.
- for standard clamping wedges, back-serrated knives with a thickness of 8 mm to 10 mm are suitable
- for clamping thinner back-serrated knives, special clamping wedges must be used
- for machining abrasive materials, a wear-resistant TC solid-blade system with micro-gearing is used, see Chapter 10: Spare Parts
- Art. 2412: Maximale Profiltiefen (Pt<sub>max</sub>) in Abhängigkeit der Messerhöhe H
- Art. 2414: maximum profile depth (Pt<sub>max</sub>) depending on height H

**Ersatzteile**  
*Spare parts*

|                            | Dim.                   | Art.Nr.    |
|----------------------------|------------------------|------------|
| Spannkeil - Clamping wedge | B=60                   | 707.431    |
|                            | B=80                   | 707.432    |
|                            | B=100                  | 707.433    |
|                            | B=130                  | 707.435    |
|                            | B=150                  | 707.436    |
|                            | B=170                  | 707.440    |
|                            | B=210                  | 707.442    |
| Schraube - Screw           | M10x1x20               | 705.552.01 |
|                            | T-Schlüssel - T wrench | SW6        |

### RiffelTec®-Sägerau-Hobelsystem

Aufgeraute Holzoberflächen ermöglichen eine gute Verzahnung zwischen der aufgetragenen Farbschicht und der Werkstückoberfläche. Dadurch wird Abblättern verhindert und die Auftragsmenge erhöht. Dies führt zu längeren Renovierungsintervallen bei Hölzern im Außenbereich.

Der Einsatz unserer hierfür vorgesehenen RiffelTec®-Hobelwerkzeuge erfolgt auf den letzten Wellen der Hobel- oder Kehlmaschine und dient zur Herstellung einer sägerauen Holzoberfläche.

Die erzeugte sägeraute Holzoberfläche ähnelt sägerauen, mit der Bandsäge geschnittenen Oberflächen. Je nach Voreinstellung stellen sich die Fasern beim Hobeln mehr oder weniger stark auf. Die entstehende Riffelung ist gleichmäßig und präzise, wodurch die Haftung nachfolgender Anstriche erhöht wird.

**Wir bieten das RiffelTec®-System mit querverzahnnten Streifenhobelmessern oder mit quer- und rückenverzahnnten Blanketts an.**

RiffelTec®-Hobelköpfe sind speziell für das Aufrauen von Oberflächen entwickelt. Sie verfügen über die zum Aufrauen notwendigen Schnittwinkel und eine axiale Einstellmöglichkeit für die RiffelTec®-Hobelmesser.

Die präzise RiffelTec®-Hydrohobelausführung gewährleistet eine konstant voreingestellte Aufrautiefe und -struktur.

**Die Einstellung des Hobelergebnisses von feinverzahnt bis sägerau ist über axial einstellbare Hobelmesser möglich.**

Durch den Einsatz der bekannten Streifenhobelmesser bzw. rückenverzahnnten Blanketts mit der RiffelTec®-Querverzahnung entsteht eine große Nachschärfzone, je nach verwendetem Hobelmesser mehr als 15 mm. Diese ermöglicht lange Instandsetzungsintervalle, die sich zudem einfach und schnell auf Standardschleifmaschinen durchführen lassen.

Der RiffelTec®-Hobelkopf sorgt dafür, dass die sägeraute Oberfläche möglichst tief eingearbeitet wird, und ermöglicht die Anpassung der sägerauen Struktur an Vorschubgeschwindigkeit und Holzart. Die im Hobelkopf eingespannten, querverzahnnten RiffelTec®-Streifenhobelmesser oder RiffelTec®-Blanketts lassen sich axial verschieben und auf Anschlag positionieren.

Das System kommt auf mehrspindligen Hobel- oder Kehlmaschinen nach dem Hobeln auf den letzten Spindeln, oben und/oder unten, zum Einsatz.



### RiffelTec® planer head to roughen wood surfaces

*Roughened wooden surfaces allow for strong interlocking between the applied paint layer and the workpiece surface. This prevents peeling and increases the amount of material applied. As a result, maintenance intervals for exterior wood are extended.*

*Our specially designed RiffelTec® planing tools are used on the last spindles of planing or moulding machines to create a rough-hewn wood surface.*

*The resulting surface resembles wood cut with a bandsaw. Depending on the pre-settings, the fibres raise more or less during planing. The resulting corrugation is uniform and precise, which improves adhesion of subsequent coatings.*

**We offer the RiffelTec® system with cross-serrated planer knives or with cross- and back-serrated blank knives.**

*RiffelTec® planer heads are specifically designed for surface roughening. They feature the cutting angles required for roughening and offer axial adjustment for the RiffelTec® planing knives. The precise RiffelTec® hydro-planing design ensures a consistent, pre-set roughening depth and structure.*

**The planing result can be adjusted from finely serrated to rough-hewn via axially adjustable planer knives.**

*Using the proven strip planer knives or back-serrated knives with RiffelTec® cross-toothing creates a large resharpening zone of over 15 mm (depending on the knife used). This allows for numerous maintenance cycles that can be carried out quickly and easily on standard grinding machines. The RiffelTec® planer head ensures the rough-hewn surface is worked in as deeply as possible and allows adjustment of the rough structure according to feed rate and wood type.*

*The cross-serrated RiffelTec® strip planer knives or RiffelTec® blank knives clamped in the planer head can be adjusted axially and positioned to the stop.*

*The system is used on multi-spindle planing or moulding machines after planing on the last spindles, at the top and/or bottom.*



2412

**RiffelTec® - HSK85WS-Sägerau-Hobelkopf***RiffelTec® - HSK85WS Planer Head to Roughen Wood Surfaces*PG  
02

**HSK85WS-Sägerau-Hobelkopf - Für querverzahnte RiffelTec®-Blanketts**  
*HSK85WS planer head to roughen wood surfaces - for cross-serrated RiffelTec® blanks*

| D  | B   | S       | Z | n <sub>max</sub> | Art. Nr. LH         | Art. Nr. RH         |
|----|-----|---------|---|------------------|---------------------|---------------------|
| 90 | 80  | HSK85WS | 4 | 12000            | <b>2412.080.085</b> | <b>2412.090.084</b> |
| 90 | 100 | HSK85WS | 4 | 12000            | <b>2412.090.104</b> | <b>2412.090.204</b> |
| 90 | 160 | HSK85WS | 4 | 12000            | <b>2412.090.164</b> | <b>2412.090.165</b> |
| 90 | 210 | HSK85WS | 4 | 12000            | <b>2412.090.214</b> | <b>2412.090.211</b> |

- Monoblock RiffelTec®-Hobelkopf HSK85WS für quer- und rückenverzahnte Blanketts
- Zum Einsatz auf Kehlmaschinen mit Schnittstelle HSK85WS und mechanischem Vorschub
- Schnittwinkel für RiffelTec®-Blanketts zum Aufrauen von Holzoberflächen
- Lieferumfang: RiffelTec®-Monoblock-Hobelkopf ohne Blanketts

- *Monoblock RiffelTec® planer head HSK85WS for cross- and back-serrated blank knives designed for use on moulders with an HSK85WS interface and mechanical feed*
- *optimised cutting angle for RiffelTec® blanks to roughen wood surfaces*
- *items delivered: RiffelTec® Monoblock planer head without blank knives*

**HSK85WS-Sägerau-Hobelkopf - Für querverzahnte RiffelTec®-Blanketts**  
*HSK85WS planer head to roughen wooden surfaces - for cross-serrated RiffelTec® blanks*

| B   | H  | T | Art. Nr.           |
|-----|----|---|--------------------|
| 80  | 40 | 8 | <b>794.080.040</b> |
| 80  | 50 | 8 | <b>794.080.050</b> |
| 100 | 40 | 8 | <b>794.100.040</b> |
| 160 | 40 | 8 | <b>794.160.040</b> |
| 210 | 40 | 8 | <b>794.210.040</b> |
| 210 | 50 | 8 | <b>794.210.050</b> |

2210

**RiffelTec®-Hydro-Sägerau-Hobelkopf***RiffelTec® Hydro Planer Head to Roughen Wood Surfaces*PG  
02

**Hydrohobelkopf zum sägerauen Hobeln - Für querverzahnte RiffelTec®-Streifenhobelmesser**  
*Hydro planer head for rough-hewn planing - for cross-serrated RiffelTec® strip planer blades*

| D       | B   | d  | Z | n <sub>max</sub> | Art. Nr.            |
|---------|-----|----|---|------------------|---------------------|
| 163/155 | 80  | 50 | 6 | 8000             | <b>2210.163.080</b> |
| 163/155 | 100 | 50 | 6 | 8000             | <b>2210.163.100</b> |
| 163/155 | 130 | 50 | 6 | 8000             | <b>2210.163.130</b> |
| 163/155 | 150 | 50 | 6 | 8000             | <b>2210.163.150</b> |
| 163/155 | 200 | 50 | 6 | 8000             | <b>2210.163.200</b> |
| 163/155 | 230 | 50 | 6 | 8000             | <b>2210.163.230</b> |

- RiffelTec®-Hydrohobelkopf für querverzahnte Streifenhobelmesser
- Zum Einsatz auf Kehlmaschinen mit Spindeldurchmesser 50 mm und mechanischem Vorschub
- Schnittwinkel für RiffelTec®-Hobelmesser zum Aufrauen von Holzoberflächen
- Lieferumfang: RiffelTec®-Hydrohobelkopf ohne Hobelmesser

- *RiffelTec® hydro planer head for cross-serrated strip planer blades*
- *designed for use on moulders with a spindle diameter of 50 mm and mechanical feed*
- *optimised cutting angle for RiffelTec® planer knives to roughen wood surfaces*
- *items delivered: RiffelTec® hydro planer head without planer blades*

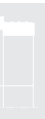
**Hydrohobelkopf zum sägerauen Hobeln - Für querverzahnte RiffelTec®-Streifenhobelmesser**  
*Hydro planer head for rough-hewn planing - for cross-serrated RiffelTec® strip planer blades*

| B   | H  | T | Art. Nr.           |
|-----|----|---|--------------------|
| 80  | 30 | 3 | <b>792.080.030</b> |
| 100 | 30 | 3 | <b>792.100.030</b> |
| 130 | 30 | 3 | <b>792.130.030</b> |
| 150 | 30 | 3 | <b>792.150.030</b> |
| 200 | 30 | 3 | <b>792.200.030</b> |
| 230 | 30 | 3 | <b>792.230.030</b> |

01



02



03



04



05



06



07



08



09



10



11




**Hobelkopf zum sägerauen Hobeln – Für querverzahnte RiffelTec®-Streifenhobelmesser**  
*Planer head for rough-hewn planing - for cross-serrated RiffelTec® strip planer blades*

| D   | B   | d  | Z | n <sub>max</sub> | Art. Nr.            |
|-----|-----|----|---|------------------|---------------------|
| 130 | 80  | 40 | 4 | 8000             | <b>2104.130.080</b> |
| 130 | 100 | 40 | 4 | 8000             | <b>2104.130.100</b> |
| 130 | 130 | 40 | 4 | 8000             | <b>2104.130.130</b> |
| 130 | 150 | 40 | 4 | 8000             | <b>2104.130.150</b> |
| 130 | 200 | 40 | 4 | 8000             | <b>2104.130.200</b> |
| 130 | 230 | 40 | 4 | 8000             | <b>2104.130.230</b> |

- RiffelTec®-Hobelkopf für querverzahnte Streifenhobelmesser
- Standardausführung ohne Hydro, zum Einsatz auf Kehlmaschinen mit Spindeldurchmesser von 40 mm und mechanischem Vorschub
- Schnittwinkel für RiffelTec®-Hobelmesser zum Aufrauen von Holzoberflächen
- Lieferumfang: RiffelTec®-Hobelkopf ohne Hobelmesser
- *RiffelTec® planer head for cross-serrated strip planer blades*
- *standard version without hydro, for use on moulders with a spindle diameter of 40 mm and mechanical feed*
- *optimised cutting angle for RiffelTec® planer blades to roughen wood surfaces*
- *items delivered: RiffelTec® planer head without strip planer blades*

**RiffelTec® querverzahnte HS-Streifenhobelmesser**  
*RiffelTec® cross-serrated HSS planer knives*

| B   | H  | T | Art. Nr.           |
|-----|----|---|--------------------|
| 80  | 30 | 3 | <b>792.080.030</b> |
| 100 | 30 | 3 | <b>792.100.030</b> |
| 130 | 30 | 3 | <b>792.130.030</b> |
| 150 | 30 | 3 | <b>792.150.030</b> |
| 200 | 30 | 3 | <b>792.200.030</b> |
| 230 | 30 | 3 | <b>792.230.030</b> |

Herstellung auf Anfrage für verschiedene Hobelmaschinen und Messersysteme.  
Wir bieten Hobelwellen für folgende Messersysteme an:

- Streifenhobelmesser
- Rückenverzahnte Hobelmesser
- Tersamesser
- CentroLock-Messer
- Wendemesser für spiralisierte Hobelwellen

Bitte verwenden Sie für Ihre Anfrage die Dimensionszeichnung.

*On request we offer planer shafts for various planer machines and blade systems.  
We offer planer shafts for the following blade systems:*

- *strip planer blades*
- *back-serrated planer blades*
- *Tersa blades*
- *CentroLock blades*
- *reversible blades for helical cutterheads*

*Please use the dimension drawings for your enquiry.*



01



02



03



04



05



06



07



08



09

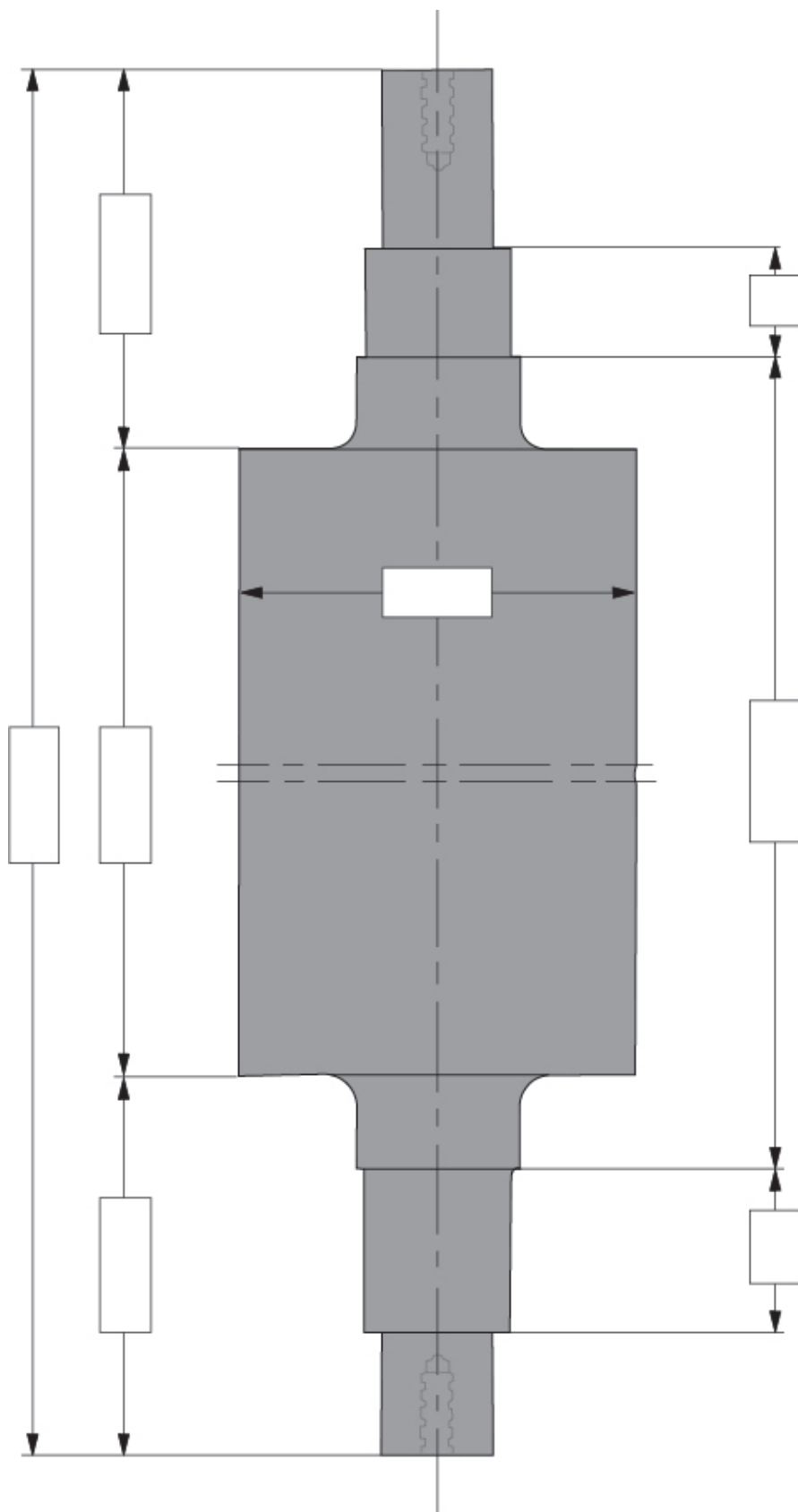


10

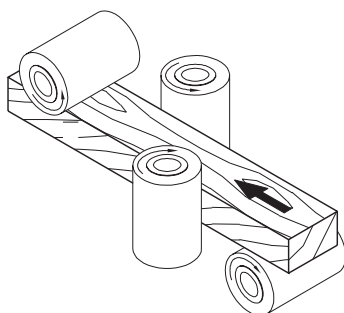


11





- Bitte tragen Sie die gewünschten Abmessungen ein.  
Senden Sie uns eine Kopie mit Angabe des gewünschten Messersystems als Anfrage zu.  
Als Messersysteme kommen in Frage:  
Tersa, CentroLock, HW-Wendemesser 15x15x2,5 oder 21x21x5,5, Streifenhobelmesser sowie rückenverzahnte Hobelmesser.
- Please fill in the required dimensions.  
Send us a copy with information on the requested blade type.  
We offer planer shafts for:  
Tersa, CentroLock, TC reversible blades 15x15x2.5 or 21x21x5.5, strip planer blades, and back-serrated planer blades.


**HW-Spiralmesserkopf**  
*TC helical cutterhead*
**MEC**
**HW**

| D   | B   | d  | Spiralen | Typ | n <sub>max</sub> | RH oben | LH unten | Art. Nr.            |
|-----|-----|----|----------|-----|------------------|---------|----------|---------------------|
| 125 | 100 | 40 | 6 (30)   | 1   | 10000            |         |          | <b>5104.125.100</b> |
|     | 130 |    | 6 (36)   | 1   | 10000            |         |          | <b>5104.125.130</b> |
|     | 130 |    | 6 (36)   | 2   | 10000            | *       |          | <b>5104.125.132</b> |
|     | 130 |    | 6 (36)   | 2   | 10000            |         | *        | <b>5104.125.133</b> |
|     | 180 |    | 6 (48)   | 1   | 10000            |         |          | <b>5104.125.180</b> |
|     | 230 |    | 6 (60)   | 1   | 10000            |         |          | <b>5104.125.230</b> |
|     | 240 |    | 6 (63)   | 2   | 10000            | *       |          | <b>5104.125.240</b> |
|     | 240 |    | 6 (63)   | 2   | 10000            |         | *        | <b>5104.125.241</b> |

- Ausführung mit Leichtmetall-Grundkörper
- 6 Spiralen, bestückt mit balligen WP 15x15x2,5
- *featuring a light metal body*
- *6 spirals, equipped with rounded inserts WP 15x15x2.5*

**Gewendelte Ausführung**

Aufteilung der Spanabnahme führt zu reduzierter Antriebsleistung und minimiertem Arbeitsgeräusch.

- WP-Messerkopf mit vierseitig schneidenden Wendepaletten, die glatte Oberflächen durch bombierte Schneidkanten erzeugen. Im Überschneidungsbereich sind nur kaum sichtbare Markierungen erkennbar. Für fertig gehobelte Oberflächen nur bedingt geeignet.
- Anordnung der Wendepaletten:  
Typ 1: standardmäßig mit achsparalleler Schneidkante  
Typ 2: mit in die Spirale eingedrehten Schneidkanten

**Helical design**

*Chip removal is evenly distributed, resulting in reduced driving power and therefore, minimised operating noise.*

- *Cutterhead with four-sided indexable sheets, producing smooth surfaces thanks to rounded cutting edges. Only minimal marks are visible in overlapping areas. However, it is only partially suitable for finished surfaces.*
- *arrangement of indexable sheets:*  
*type 1: standard with axially parallel cutting edges*  
*type 2: cutting edges twisted into spiral*

**Wendemesser/Ersatzteile**
*Reversible knives/Spare parts*

|  | Dim.      | Art. Nr.          |
|--|-----------|-------------------|
| Wendemesser, ballig - <i>Indexable knife, convex</i> | 15x15x2,5 | <b>754.106</b>    |
| Spannschraube - <i>Clamping screw</i>                | M5x13     | <b>705.320.13</b> |
| Torx Schlüssel - <i>Torx wrench</i>                  | T20       | <b>706.305</b>    |



Typ 1

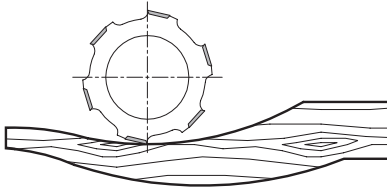


Typ 2

**5209****HW-Spiralmesserkopf – Wendemesser**  
TC Helical Cutterhead - Reversible Knives**PG  
02****HW-bestückter Hobelkopf mit spiralig angeordneten Schneiden**  
TC-tipped cutterhead with spirally arranged blades**MAN****HW**

| D  | B   | d  | Spiralen | n <sub>max</sub> | Art. Nr.            |
|----|-----|----|----------|------------------|---------------------|
| 80 | 100 | 50 | 6 (30)   | 9500-15000       | <b>5209.080.100</b> |

- WP-Messerkopf mit vierseitig schneidenden Wendeplatten, die glatte Oberflächen durch bombierte Schneidkanten erzeugen. Im Überschneidungsbereich sind nur kaum sichtbare Markierungen erkennbar. Für fertig gehobelte Oberflächen nur bedingt geeignet.
- Cutterhead with four-sided indexable sheets, producing smooth surfaces thanks to rounded cutting edges. Only minimal marks are visible in overlapping areas. However, it is only partially suitable for finished surfaces.

**Wendemesser/Ersatzteile**  
Reversible knives/Spare parts

|                                | Dim.    | Art. Nr.       |
|--------------------------------|---------|----------------|
| Wendemesser - Reversible knife | 14x14x2 | <b>750.111</b> |
| Spannschraube - Clamping screw | M5x6    | <b>705.425</b> |
| Torx Schlüssel - Torx wrench   | T15     | <b>706.304</b> |

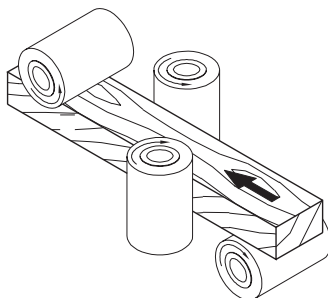
**8104****HW-Spiralfräser - Festbestückt**  
TC Helical Cutterhead - Tipped**PG  
02****HW-bestückter Hobelkopf mit spiralig angeordneten Schneiden**  
TC-tipped planer cutterhead with spirally arranged blades**MEC****HW**

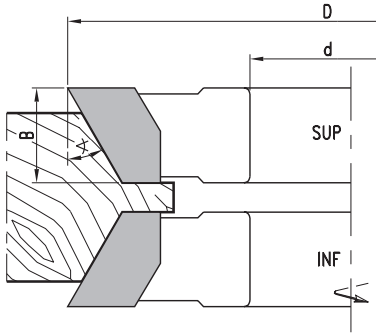
| D   | B   | d  | Z  | n <sub>max</sub> | Art. Nr.            |
|-----|-----|----|----|------------------|---------------------|
| 125 | 120 | 40 | 12 | 12000            | <b>8104.125.120</b> |
|     | 180 | 40 | 12 | 12000            | <b>8104.125.180</b> |
|     | 230 | 40 | 12 | 12000            | <b>8104.125.230</b> |

- Glatte Oberflächen dank exakt geschliffenem Flugkreis
- Ideal für fertig gehobelte Oberflächen
- *precisely ground cutting diameter ensures smooth surfaces*
- *ideal for finished planed surfaces*

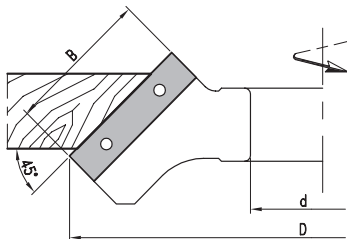
Gewendelte Ausführung

Aufteilung der Spanabnahme führt zu reduzierter Antriebsleistung und minimiertem Arbeitsgeräusch.

*Helical design**Chip removal is evenly distributed, resulting in reduced driving power and therefore, minimised operating noise.*

**8159****HW-Fasefräser – Festbestückt**  
TC Chamfer Cutter - TippedPG  
02**HW-bestückter Fasefräser für Handvorschub – stirn- und umfangsschneidend**  
TC-tipped chamfer cutter for manual feed - face- and peripheral-cutting**MAN****HW**

| D   | B  | d     | Z | α   | n <sub>min</sub> - n <sub>max</sub> | Art. Nr.            | Art. Nr.            |
|-----|----|-------|---|-----|-------------------------------------|---------------------|---------------------|
| 150 | 30 | 30/50 | 4 | 45° | 5200-8900                           | <b>8159.150.030</b> | <b>8159.150.130</b> |

**5159****HW-Fasefräser – Wendemesser**  
TC Chamfer Cutter - Reversible KnivesPG  
02**WP-Fasefräser für Handvorschub**

Chamfer cutter with reversible knives for manual feed

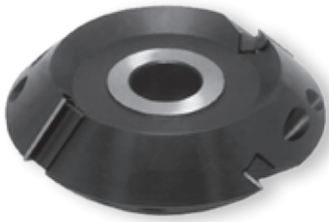
**MAN****HW**

| D   | B  | d     | Z | n <sub>min</sub> - n <sub>max</sub> | Art. Nr.            |
|-----|----|-------|---|-------------------------------------|---------------------|
| 175 | 50 | 30/50 | 4 | 4300-7400                           | <b>5159.175.050</b> |

**Wendemesser/Ersatzteile**

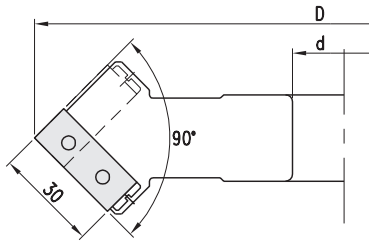
Reversible knives/Spare parts

|                                | Dim.      | Art. Nr.          |
|--------------------------------|-----------|-------------------|
| Wendemesser - Reversible knife | 50x12x1,5 | <b>750.106</b>    |
| Spannkeil - Clamping wedge     |           | <b>707.002.48</b> |
| Gewindestift - Set screw       | M8x16     | <b>705.542</b>    |
| Sechskantschlüssel - Allen key | SW4       | <b>706.104</b>    |

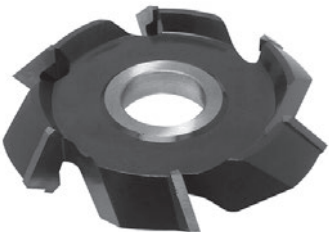
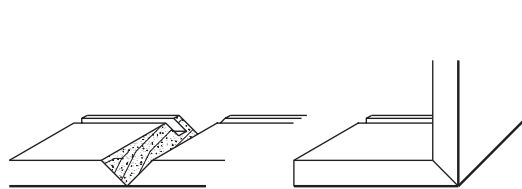

**WP-Foldingfräser für Handvorschub**
*Folding cutter with reversible knives for manual feed*
**MAN**
**HW**

| D   | B  | d     | Z   | W   | T <sub>max</sub> | n <sub>min</sub> - n <sub>max</sub> | Art. Nr.            |
|-----|----|-------|-----|-----|------------------|-------------------------------------|---------------------|
| 140 | 42 | 30/50 | 2+2 | 90° | 20               | 5500-9500                           | <b>5119.140.030</b> |

- Der WP-Foldingfräser für Handvorschub eignet sich zum Einfräsen von V-Nuten in Korpusteile, Schubladenelemente, Türzargen und ähnliche Bauteile. Der Fräseröffnungswinkel ist für eine 90°-Verbindung vorgesehen.
- *The folding cutter with reversible knives for manual feed is designed for cutting V-grooves in cabinet parts, drawer elements, door frames, and similar components. The cutter opening angle is intended for 90° joints.*


**Wendemesser/Ersatzteile**
*Reversible knives/Spare parts*

|                                | Dim.        | Art. Nr.          |
|--------------------------------|-------------|-------------------|
| Wendemesser - Reversible knife | 29,5x12x1,5 | <b>753.207</b>    |
| Spannkeil - Clamping wedge     | LH          | <b>707.133.30</b> |
|                                | RH          | <b>707.130.30</b> |
| Gewindestift - Set screw       | M8x12       | <b>705.541</b>    |
| Sechskantschlüssel - Allen key | SW4         | <b>706.104</b>    |

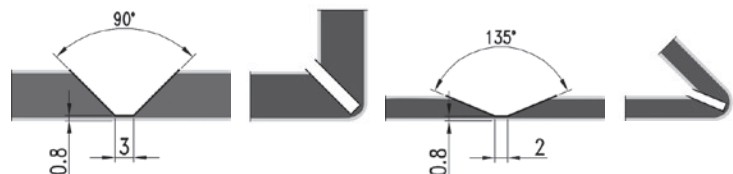
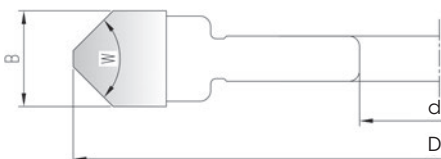
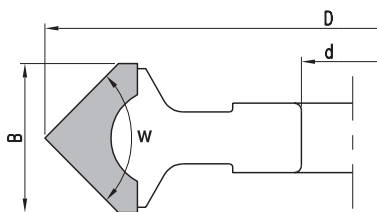

**HW-bestückter Foldingfräser für Handvorschub**
*TC-tipped folding cutter for manual feed*
**MAN**
**HW**

| D   | B  | d     | Z | W    | T <sub>max</sub> | n <sub>min</sub> - n <sub>max</sub> | Art. Nr.             |
|-----|----|-------|---|------|------------------|-------------------------------------|----------------------|
| 140 | 16 | 30/50 | 4 | 90°  | 7,0              | 5500-9500                           | <b>8119.140.016</b>  |
| 118 | 14 | 30    | 6 | 90°  | 8,0              | 1800-6500                           | <b>8119.118.090</b>  |
|     | 18 | 30    | 6 | 135° | 4,0              | 1800-6500                           | <b>8119.118.135</b>  |
| 245 | 19 | 30    | 8 | 90°  | 8,0              | 3100-7000                           | <b>*8119.245.019</b> |
| 245 | 19 | 30    | 8 | 135° | 4,0              | 3100-7000                           | <b>*8119.245.119</b> |

- Der HW-Foldingfräser für Handvorschub eignet sich zum Einfräsen von V-Nuten in Korpusteile, Schubladenelemente, Türzargen, und ähnliche Bauteile. Der Fräseröffnungswinkel ist für eine 90°- bzw. 135°-Verbindung vorgesehen.
- *The folding cutter for manual feed is designed for cutting V-grooves in cabinet parts, drawer elements, door frames, and similar components. The cutter opening angle is intended for 90° or 135° joints.*

\* Mit 3 mm Flachfase für Alucobond

\* *suitable for Alucobond with a 3 mm flat chamfer*





**WP-Schwenkmesserkopf für Handvorschub**  
*Swivel cutterhead with reversible blades for manual feed*

MAN

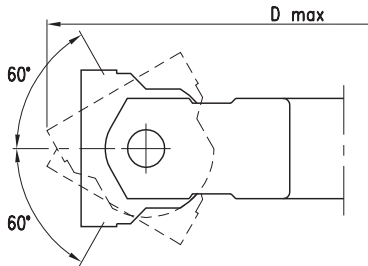
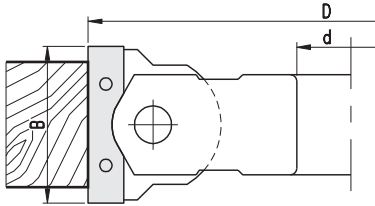
HW

| D   | Dmax | B  | d     | Z | n <sub>min</sub> - n <sub>max</sub> | Art. Nr.            |
|-----|------|----|-------|---|-------------------------------------|---------------------|
| 140 | 163  | 50 | 30    | 2 | 5500-7500                           | <b>5809.140.050</b> |
| 170 | 193  | 50 | 30/50 | 2 | 4500-6000                           | <b>5809.170.050</b> |
|     | 218  | 80 | 30/50 | 3 | 4500-6000                           | <b>5809.170.080</b> |

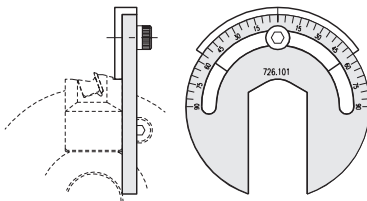
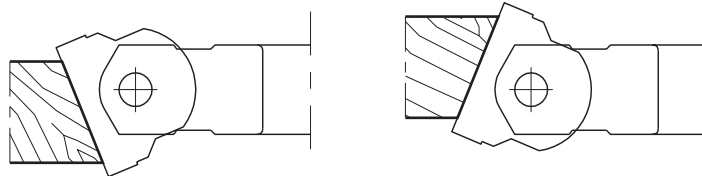
- Der 120°-stufenlos verstellbare Bereich ermöglicht das präzise Einstellen vorgegebener Winkel mithilfe der Winkel-Einstellehre.
- *the 120° infinitely variable range allows for a precise setting of pre-determined angles using an angle setting gauge*

**Wendemesser/Ersatzteile**  
*Reversible knives/Spare parts*

|  | Dim.      | B  | Art. Nr.       |
|--|-----------|----|----------------|
| Wendemesser - <i>Reversible knife</i>            | 50x12x1,5 |    | <b>750.106</b> |
|  | 80x13x2,2 |    | <b>750.108</b> |
| Spannkeil - <i>Clamping wedge</i>                |           | 50 | <b>707.121</b> |
|  |           | 80 | <b>707.128</b> |
| Spannschraube - <i>Clamping screw</i>            | M8x10     |    | <b>705.540</b> |
| Sechskantschlüssel - <i>Allen key</i>            | SW4       |    | <b>706.104</b> |
|  | SW5       |    | <b>706.105</b> |
| Winkel-Einstellehre - <i>Angle setting gauge</i> |           |    | <b>726.101</b> |

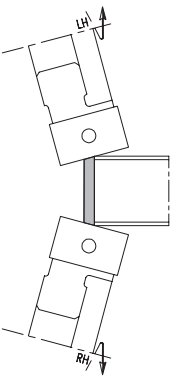
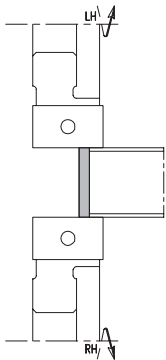
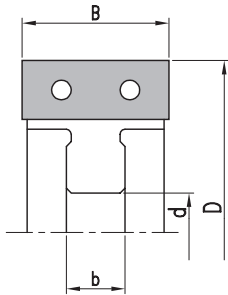


Stufenlos schwenkbar, Skala mit 2,5°-Teilung  
*continuously swiveling, scale with 2.5° increments*



Art. 726.101 · Winkel-Einstellehre mit 1°-Teilung  
 · *angle setting gauge with 1° increments*

- 01 Sägen
- 02 Spannen
- 03 Hobeln / Fräsen
- 04 Profilläsen
- 05 Nub- und Federfräsen
- 06 Oberfräsen
- 07 Bohren
- 08 PKD-Werkzeuge
- 09 Spannen
- 10 Ersatzteile
- 11 Informationen

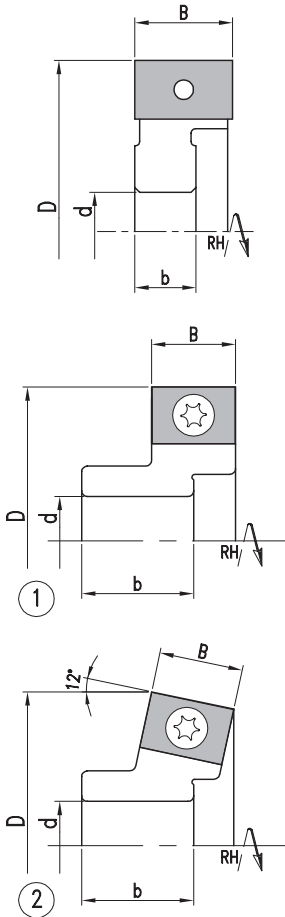

**WP-Fügefräser zum Bündigfräsen oder Anfasen von Kantenanleimern**  
*Jointing cutter with reversible knives for trimming or chamfering edge bandings*
**MEC****HW**

| D                    | B/b   | d  | DKN   | Z | n <sub>max</sub> | Art. Nr.            |
|----------------------|-------|----|-------|---|------------------|---------------------|
| <b>IMA</b>           |       |    |       |   |                  |                     |
| 50                   | 12/10 | 16 | 5x2,3 | 2 | 18000            | <b>5108.050.012</b> |
|                      | 15/10 | 16 | 5x2,3 | 2 | 18000            | <b>5108.050.015</b> |
| <b>SCM - Stefani</b> |       |    |       |   |                  |                     |
| 70                   | 20/11 | 16 | 6x3,5 | 6 | 18000            | <b>5108.070.420</b> |
| 75                   | 20/11 | 16 | 6x3,5 | 4 | 18000            | <b>5108.075.020</b> |
| 80                   | 20/11 | 16 | 5x2,3 | 4 | 18000            | <b>5108.080.020</b> |
|                      | 30/11 | 16 | 5x2,3 | 4 | 18000            | <b>5108.080.030</b> |
| <b>Olimpic</b>       |       |    |       |   |                  |                     |
| 70                   | 30/12 | 16 | 6x3,5 | 4 | 18000            | <b>5108.070.030</b> |
| <b>Holz-Her</b>      |       |    |       |   |                  |                     |
| 80                   | 40/25 | 30 | 8x3,3 | 4 | 18000            | <b>5108.080.040</b> |

- Der 120°-stufenlos verstellbare Bereich ermöglicht das präzise Einstellen vorgegebener Winkel mithilfe der Winkel-Einstellehre.
- *the 120° infinitely variable range allows for a precise setting of pre-determined angles using an angle setting gauge*

**Wendemesser / Ersatzteile**
*Reversible knives / Spare parts*

|                                       | Dim.      | B   | Art. Nr.          |
|---------------------------------------|-----------|-----|-------------------|
| Wendemesser - <i>Reversible knife</i> | 12x12x1,5 |     | <b>754.102</b>    |
|                                       | 15x12x1,5 |     | <b>750.101</b>    |
|                                       | 20x12x1,5 |     | <b>750.102</b>    |
|                                       | 30x12x1,5 |     | <b>750.104</b>    |
|                                       | 40x12x1,5 |     | <b>750.105</b>    |
| Spannkeil - <i>Clamping wedge</i>     |           | 12  | <b>707.001.10</b> |
|                                       |           | 15  | <b>707.001.13</b> |
|                                       |           | 20  | <b>707.001.18</b> |
|                                       |           | 30  | <b>707.001.28</b> |
| Gewindestift - <i>Set screw</i>       | M6x12     |     | <b>705.533</b>    |
| Sechskantschlüssel - <i>Allen key</i> | SW3       |     | <b>706.103</b>    |
| Einstellehre - <i>Setting gauge</i>   |           | 1,0 | <b>717.302</b>    |


**Zum Bündigfräsen oder Anfasen von Kantenanleimern**  
*For trimming or chamfering edge bandings*

MEC

HW

| D   | B/b     | d  | DKN   | Z | n <sub>max</sub> | Art. Nr. LH  | Art. Nr. RH  |
|---|---------|----|-------|---|------------------|--------------|--------------|
| <b>Brandt - Homag - IMA - IDM - SCM - Stefani</b> |         |    |       |   |                  |              |              |
| 70  | 20/12,5 | 20 | 6x3,5 | 6 | 18000            | 5284.070.420 | 5284.070.520 |
| <b>SCM - Stefani</b>                              |         |    |       |   |                  |              |              |
| 72  | 30/12   | 16 | 6x3,5 | 4 | 18000            | 5284.072.030 | 5284.072.130 |
| <b>FRAVOL</b>                                     |         |    |       |   |                  |              |              |
| 70  | 20/11,5 | 16 | 5x3,5 | 6 | 18000            | 5284.070.830 | 5284.070.930 |
| <b>SCM - Type 1</b>                               |         |    |       |   |                  |              |              |
| 48  | 14,6/20 | 16 | 5x2,3 |   | 18000            | 5284.048.015 | 5284.048.115 |
| <b>SCM - Type 2</b>                               |         |    |       |   |                  |              |              |
| 48  | 14,6/20 | 16 | 5x2,3 | 2 | 18000            | 5284.048.215 | 5284.048.315 |
| 52,8  | 14,6/20 | 16 | 5x2,3 |   | 18000            | 5284.053.015 | 5284.053.115 |

**Wendemesser/Ersatzteile**
*Reversible knives/Spare parts*

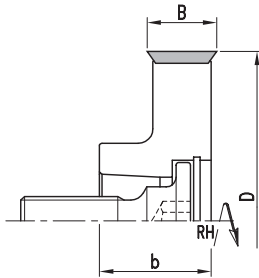
|                                | Dim.       | B   | Art. Nr.   |
|--------------------------------|------------|-----|------------|
| Wendemesser - Reversible knife | 12x12x1,5  |     | 754.102    |
|                                | 14,6x9x1,5 |     | 750.090    |
|                                | 20x12x1,5  |     | 750.102    |
| Spannkeil - Clamping wedge     |            | 20  | 707.001.18 |
|                                |            | 30  | 707.001.28 |
| Gewindestift - Set screw       | M6x12      |     | 705.533    |
| Torx Schraube - Torx screw     | M3,5x7,5   |     | 705.350    |
| Sechskantschlüssel - Allen key | SW3        |     | 706.103    |
| Torx Schlüssel - Torx wrench   | T15        |     | 706.302    |
| Einstelllehre - Setting gauge  |            | 1,0 | 717.302    |



**5102**

## HW-Kantenfügefräser HSK25R – Wendemesser

TC Edge Jointing Cutter HSK25R - Reversible Knives

PG  
02

Zum Bündigfräsen oder Anfasen von Kantenanleimern  
For trimming or chamfering edge bandings

MEC

HW

| D                  | B/b     | d      | Z | n <sub>max</sub> | Art. Nr. LH         | Art. Nr. RH         |
|--------------------|---------|--------|---|------------------|---------------------|---------------------|
| <b>Homag - IMA</b> |         |        |   |                  |                     |                     |
| 70                 | 14,3/23 | HSK25R | 4 | 18000            | <b>5102.070.114</b> | <b>5102.070.014</b> |

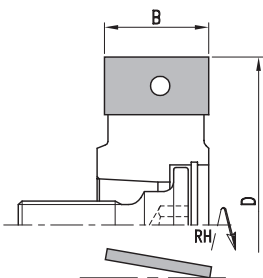
Wendemesser/Ersatzteile  
Reversible knives/Spare parts

|  | Dim.          | Art. Nr.          |
|--|---------------|-------------------|
| Wendemesser - Reversible knife                       | 14,3x14,3x2,5 | <b>750.116</b>    |
| Spannschraube - Clamping screw                       | M5x13         | <b>705.320.13</b> |
| Torx Schlüssel - Torx wrench                         | T20           | <b>706.305</b>    |
| Spannschraube für HSK25R - Clamping Screw for HSK25R | M10x1,25      | <b>705.099</b>    |

**5602**

## HW-Kantenfügefräser HSK25R – Wendemesser

TC Edge Jointing Cutter HSK25R - Reversible Knives

PG  
02

Zum Bündigfräsen oder Anfasen von Kantenanleimern  
For trimming or chamfering edge bandings

MEC

HW

| D                  | B  | d      | Z | n <sub>max</sub> | Art. Nr. LH         | Art. Nr. RH         |
|--------------------|----|--------|---|------------------|---------------------|---------------------|
| <b>Homag - IMA</b> |    |        |   |                  |                     |                     |
| 70                 | 24 | HSK25R | 4 | 18000            | <b>5602.070.124</b> | <b>5602.070.024</b> |

- Mit ziehendem Schnitt
- with axial angle

Wendemesser/Ersatzteile  
Reversible knives/Spare parts

|  | Dim.        | Art. Nr.          |
|--|-------------|-------------------|
| Wendemesser - Reversible knife                       | 24,7x12x1,5 | <b>750.103</b>    |
| Spannkeil - Clamping wedge                           | RH          | <b>707.130.25</b> |
|  | LH          | <b>707.133.25</b> |
| Gewindestift - Set screw                             | M8x12       | <b>705.541</b>    |
| Sechskantschlüssel - Allen key                       | SW4         | <b>706.104</b>    |
| Spannschraube für HSK25R - Clamping screw for HSK25R | M10x1,25    | <b>705.099</b>    |
| Einstelllehre - Setting gauge                        | 1,0         | <b>717.302</b>    |

- Kantenfräser zum Abrunden, siehe Kapitel 4: Fräswerkzeuge mit Bohrung, profiliert
- edge jointing cutter for rounding, see Chapter 04: Bored, profiled Cutting Tools

